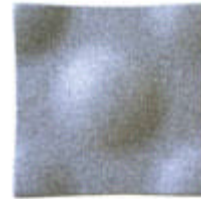


# OFFECCT

Soundwave panels design by Teppo Asikainen

The Swell panels are designed to be used as lightweight sound absorbers in the upper frequency range [500 Hz and above]. They are well suited to eliminate disturbing reflections of environmental voice sounds, telephones and computer disk drives etc. They can also be used to improve privacy in an open work area such as a modern office space or a restaurant.



## SWELL

**MATERIALS**  
Moulded polyester fibre

**COLOURS**  
Grey, Anthracite and Off-white

**DIMENSIONS**  
585 x 585 x 80 mm - 22,8 x 22,8 x 3.1 inches

The Diffuser panel provides not sound absorption but sound diffusion. Placed in the proper position, it will improve speech intelligibility and even improve privacy in open spaces.



## SWELL diffuser

"The Swell diffuser panel is completing the product range by providing not sound absorption but sound diffusion. This is an often overlooked, but important aspect of acoustic design. If all sound reflections in a room would be eliminated completely, we would probably find ourselves screaming to each other in order to be heard, as we would get no 'acoustic support' from the surroundings. In other words - if a listener hears a sequence of several fast reflections of a sound, together with the direct sound, he will experience it as being louder - the received sound simply contains more energy. But - and this is important - these reflections must be of a good nature. That is, they should be evenly spread out in time and space. This is what a Diffuser does. Placed in the proper position, it will improve speech intelligibility and even improve privacy in open spaces as the speaker doesn't need to speak very loud in order to make himself heard. "

**MATERIALS**  
PET-plastic

**COLOURS**  
Semi-transparent white

**DIMENSIONS**  
585 x 585 x 80 mm - 22,8 x 22,8 x 3.1 inches

The Scrunch panels are designed to be used as lightweight sound absorbers in the upper frequency range [500 Hz and above]. They are well suited to eliminate disturbing reflections of environmental voice sounds, telephones and computer disk drives etc. They can also be used to improve privacy in an open work area such as a modern office space or a restaurant.



## SCRUNCH

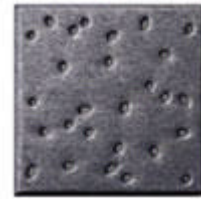
**MATERIALS**  
Moulded polyester fibre

**COLOURS**  
Grey, Anthracite and Off-white

**DIMENSIONS**  
585 x 585 x 80 mm - 22,8 x 22,8 x 3.1 inches

Witteveen Projectinrichting  
Ouderkerk a/d Amstel  
Tel: 020 - 496 5030  
Fax: 020 - 496 3052  
info@witteveen.nl  
www.project-inrichting.nl

The Luna panel is a specially designed Class A broadband absorber with extended efficiency in the low frequency range [150 Hz 500 Hz]. This panel is very efficient in reducing disturbing background noise.



---

## LUNA

**MATERIALS**  
Moulded polyester fibre

**COLOURS**  
Grey

**DIMENSIONS**  
585 x 585 x 80 mm - 22,8 x 22,8 x 3.1 inches

---

## SOUNDWAVE IN PROGRESS :

(Ready for sales after Milan fair in April)

