

SONEX from pinta acoustic is an excellent absorber for mid-range and high frequencies. The elements not only benefit from a low installation height and light weight, they also have an attractive appearance.

>> Service

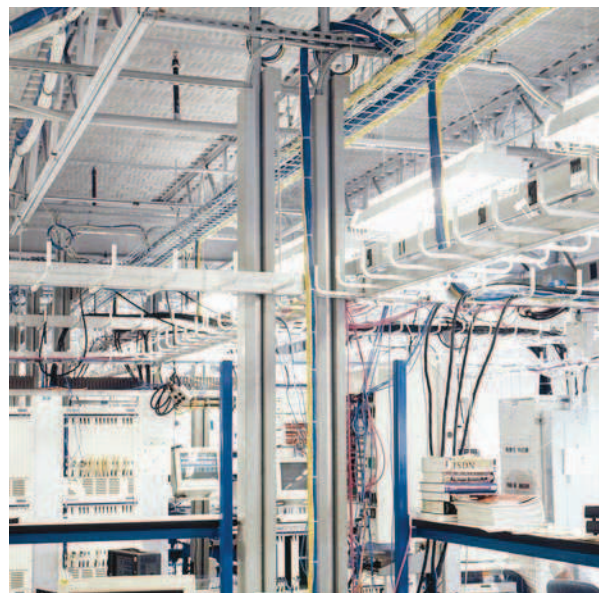
- Call our telephone hotline for advice on your individual situation.
- Animated installation guides are available on the Internet.

Witteveen Projectinrichting
Ouderkerk a/d Amstel
Tel: 020 - 496 5030
Fax: 020 - 496 3052
info@witteveen.nl
www.project-inrichting.nl
www.scheidingswand.net



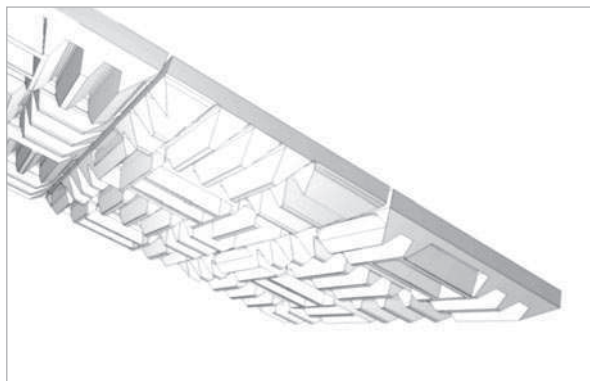
SONEX – low weight, tremendous sound absorption characteristics

To optimize your room acoustics, pinta acoustic has developed SONEX. It is based on either willtec (a fiber-free, melamine resin based foam), or a PU foam. These highly effective materials are able to cope with even the most demanding room acoustics. The extensive product range of this absorber system is supplemented by a wide choice of colors.

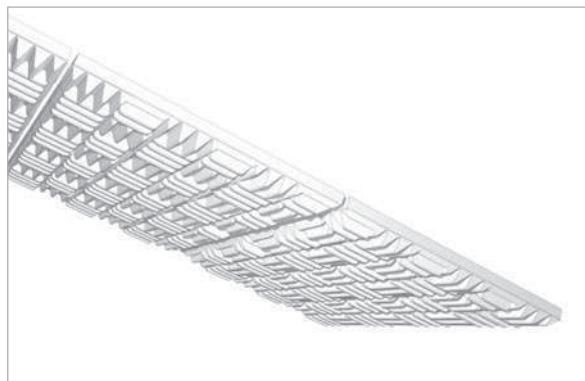


>> Choose from a range of alternatives:

- pinta PYRAMID
- pinta PLANO
- pinta PLANO H
- pinta PLANO A2



SONEX willtec white



SONEX mini

Product advantages

- Easy to install using fireproof system adhesives
- Environment-friendly, being free from synthetic and natural fibers, halogens and CFCs
- Reduced transport and handling costs due to low weight
- Exceptionally good sound absorption thanks to profiling
- Variable panel sizes and element thicknesses possible
- Available in different materials
- Uniform appearance of laid surface

Colors



white



gray

Other colors are available on request, subject to a minimum order quantity of 100 m².

Dimensions

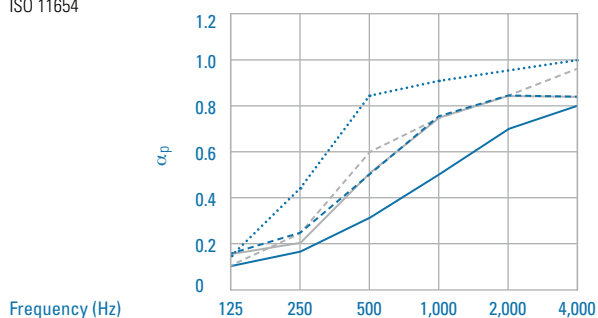
willtec

1,250 x 625 x 35 mm

1,250 x 625 x 45 mm

1,250 x 625 x 65 mm

Sound absorption coefficient α_p , pinta SONEX, material willtec, according to DIN EN ISO 11654



SONEX 20/35

α_p	0.10	0.15	0.30	0.50	0.70	0.80
------------	------	------	------	------	------	------

SONEX 35/35

α_p	0.15	0.20	0.50	0.75	0.85	0.85
------------	------	------	------	------	------	------

SONEX 35/125

α_p	0.15	0.25	0.50	0.75	0.85	0.85
------------	------	------	------	------	------	------

SONEX 45/125

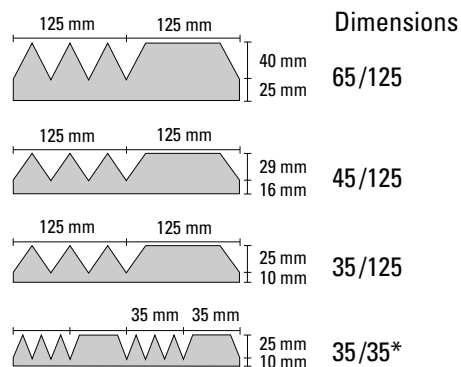
α_p	0.10	0.25	0.60	0.75	0.85	0.95
------------	------	------	------	------	------	------

SONEX 65/125

α_p	0.15	0.45	0.85	0.90	0.95	1.00
------------	------	------	------	------	------	------

Versions

Textured on one side as follows:



* 35/35 is without bevel cut and therefore may not be suitable for visible laying.

SONEX product data

Characteristic	DIN	Value
Base material		Melamine resin foam
Colors*		white gray
Material density**	EN ISO 845	9.5 ± 1.5 kg/m ³
Fire behavior	DIN 4102	B1 (flame-retardant)
General test certificate issued by building authorities		P-NDS04-291
Thermal conductivity (d = 50 mm)	DIN 52 612	$\lambda_{10,lr} < 0.035$ W/mK
Sound absorption coefficient (d = 50 mm; 2,000 Hz)	DIN 52,215	> 90 %
Tensile strength	DIN EN ISO 179	120 to 180 kPa
Percentage elongation after fracture	DIN EN ISO 1798	15 to 29 %
Compression hardness	ISO 3386-1	6 to 11 kPa
Diffusion resistance coefficient	DIN 52615	approx. 1-2
Length-specific flow resistance	DIN EN 29053	8 to 20 kNs/m ⁴
Long-term temperature stability		180 °C
Short-term temperature stability		220 °C
The foam may have pores of different sizes according to the texture.		

* Colors may vary.

** Pursuant to EN ISO 845 determined with samples having the following minimum dimensions: 250 x 250 x 250 mm.



SONEX S35sv anthracite

Colors



anthracite

Other colors are available on request, subject to a minimum order quantity of 100 m².

Dimensions

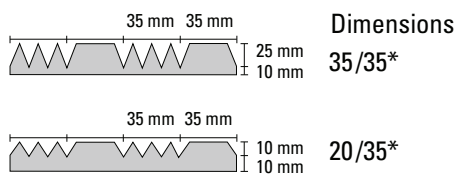
SONEX S35sv

1,000 x 1,000 x 45 mm

1,000 x 1,000 x 65 mm

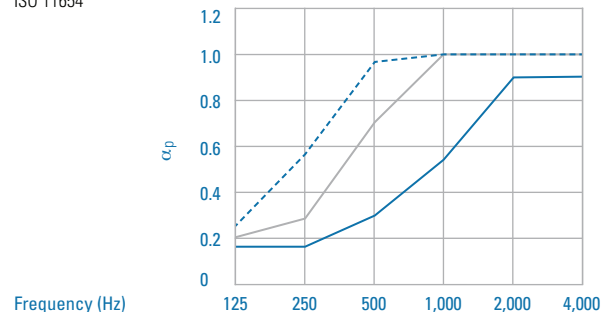
Versions

Textured on one side as follows:



* 20/35 and 35/35 are without bevel cut and therefore may not be suitable for visible laying.

Sound absorption coefficient α_p , pinta SONEX, material S35sv, according to DIN EN ISO 11654



SONEX 20/35

α_p	0.15	0.15	0.30	0.55	0.90	0.90
------------	------	------	------	------	------	------

SONEX 50/125

α_p	0.20	0.30	0.70	1.00	1.00	1.00
------------	------	------	------	------	------	------

SONEX 70/125

α_p	0.25	0.55	0.95	1.00	1.00	1.00
------------	------	------	------	------	------	------

SONEX S35sv product data

Characteristic	DIN	Value
Base material		Polyester based polyurethane foam
Color*		anthracite
Material density**	EN ISO 845	30.0 to 34.0 kg/m ³
Fire behavior	DIN 4102	B3 highly flammable, with pinta standard color finish B2 flammable
General test certificate issued by building authorities		P-NDS04-204
Sound absorption coefficient (d = 50 mm; 2,000 Hz)	DIN 52,215	> 90 %
Tensile strength	DIN EN ISO 179	> 120 kPa
Percentage elongation after fracture	DIN EN ISO 1798	> 130 %
Compression hardness	ISO 3386-1	3.7 to 5.3 kPa
The foam may have pores of different sizes according to the texture.		

* Colors may vary.

** Pursuant to EN ISO 845 determined with samples having the following minimum dimensions: 250 x 250 x 250 mm.

>> Please note

Product details are based on our current knowledge and experience. In view of the wide range of possible applications, all information is provided without obligation and does not constitute a guarantee of prop-

erties. This also applies to any proprietary rights of third parties. We reserve the right to make technical changes in line with progress.



SONEX willtec H gray

Colors



gray (inhomogeneous)

No color finish possible.



SONEX willtec A2 anthracite

Colors



gray



anthracite

Other colors are available on request, subject to a minimum order quantity of 100 m².

SONEX willtec H product data

Characteristic	DIN	Value
Base material		Melamine resin foam
Color		gray (inhomogeneous)
Material density*	EN ISO 845	9.5 ± 1.5 kg/m ³
Fire behavior	DIN 4102	B1 (flame-retardant)
General test certificate issued by building authorities		P-NDS04-197
Thermal conductivity (d = 50 mm)	DIN 52 612	$\lambda_{10,ir} < 0.035$ W/mK
Sound absorption coefficient (d = 50 mm; 2,000 Hz)	DIN 52,215	> 90 %
Tensile strength	DIN EN ISO 179	120 to 180 kPa
Percentage elongation after fracture	DIN EN ISO 1798	15 to 29 %
Compression hardness	ISO 3386-1	6 to 11 kPa
Diffusion resistance coefficient	DIN 52615	approx. 1-2
Length-specific flow resistance	DIN EN 29053	8 to 20 kNs/m ⁴
Long-term temperature stability		180°C
Short-term temperature stability		220°C

The foam may have pores of different sizes according to the texture.

* Pursuant to EN ISO 845 determined with samples having the following minimum dimensions: 250 x 250 x 250 mm.

SONEX willtec A2 product data

Characteristic	DIN	Value
Base material		Melamine resin foam with mineral impregnation
Colors		gray anthracite
Color finish		special gray special black
Material density*	EN ISO 845	80 (±10 %) kg/m ³
Fire behavior	DIN 4102	A2 (non-combustible)
General test certificate issued by building authorities		P-NDS04-201
Length-specific flow resistance	DIN EN 29053	> 20 kNs/m ⁴
Long-term temperature stability		180°C
Short-term temperature stability		220°C

The foam may have pores of different sizes according to the texture.

* Pursuant to EN ISO 845 determined with samples having the following minimum dimensions: 250 x 250 x 250 mm.



Cut absorber to the required size



Apply acoustic adhesive



Lay absorbers with a gap of at least 20 mm

Installation advice

We recommend using the adhesives below for adhesion of pinta SONEX to the following surfaces:

- porous surfaces, such as wood, brick or concrete: pinta acoustic adhesive D
- smooth, non-porous surfaces such as steel panels or PVC: pinta acoustic adhesive S

Gloves should be worn when installing pinta SONEX, to avoid getting dirt on the panels. The absorbers can be cut with a sharp knife. We recommend laying the absorbers with a shadow gap of up to 20 mm, to achieve an optimum appearance.

pinta acoustic adhesive D

Field of application

Adhesion of pinta absorbers (except A2 products) to porous interior surfaces.

Features

pinta acoustic adhesive D is ready for use and bonds immediately. Nevertheless, absorbers can be adjusted within 5 minutes after laying. pinta acoustic adhesive D securely adheres to concrete, mineral plasters, brickwork and boards made of gypsum, plasterboards and gypsum fibers as well as wooden particle boards (manufacturer's instructions must be followed).

Shelf life

At least 12 months when stored in a dry, frost-free place in unopened original packaging.

>> FAQs about bonding with acoustic adhesive D

- | | |
|---|--|
| <ul style="list-style-type: none"> ■ Spacing between elements: 20 mm ■ Acoustic adhesive D is ready for use ■ Element adjustment time: 5 minutes ■ Shelf life: 12 months in unopened original package | <ul style="list-style-type: none"> ■ Consumption: 1.2 to 1.5 kg/m² for whole-area adhesion. ■ Working temperature range: +5 to +25°C ■ Drum sizes: 5 and 20 kg |
|---|--|

Lowest film formation temperature

approx. +4°C.

Working temperature range

From approx. +5°C to approx. +25°C. Generally, pinta acoustic adhesive D must not be exposed to sub-zero temperatures.

Surface

Surfaces must be even, clean, dry, solid, stable and free of dust, oil and wax. In particular, wallpapers and coats of paint must be removed. Surfaces with insufficient stability, e.g. loose plasters, must be undercoated using a commercially available primer thinned with water in a ratio of 1:1. Uneven surfaces must be smoothed. We recommend carrying out an adhesion test.

Application

Using a toothed putty-knife (size 2-3), pinta acoustic adhesive D is applied to the whole surface area. The absorbers are pressed on and aligned. Fresh spots of adhesive must be wiped off with water. During and after adhesion of pinta products, good ventilation must be ensured so that the adhesive sets quickly.

Consumption

1.2 to 1.5 kg/m² for whole-area adhesion.

Please note

We recommend carrying out an adhesion test.

pinta acoustic adhesive S**Fields of application**

pinta acoustic adhesive S is a polydimethylsiloxane based adhesive and is particularly suitable for bonding pinta absorbers to smooth, non-porous surfaces.

Features

pinta acoustic adhesive S is ready for use and bonds immediately. Nevertheless, absorbers can be adjusted within 5 minutes after laying. pinta acoustic adhesive S adheres securely to surfaces such as steel panels, trapezoidal sheet metal and PVC.

Shelf life

12 months when stored in a dry, cool and frost-free place in unopened original packaging.

Working temperature range

From approx. +5°C to approx. +40°C. Generally, pinta acoustic adhesive S must not be exposed to sub-zero temperatures.

Skin formation

Within 5 minutes at +23°C and 50 % relative humidity.

Temperature resistance

From -50°C to +180°C.

>> FAQs about bonding with acoustic adhesive S

- Spacing between elements: 20 mm
- Acoustic adhesive S is ready for use
- Element adjustment time: 5 minutes
- Shelf life: 12 months in unopened original package
- Consumption: half a cartridge per m²
- Working temperature range: +5 to +40°C
- Packaging units: 2 or 12 pcs. per carton

Surface pre-treatment

Surfaces must be stable, clean, dry, and free of oil and grease.

Application

pinta acoustic adhesive S is applied to the surface in strips. The number of strips depends on the product and the size of the absorbers.

Consumption

approx. 0.5 cartridge per m².

Please note

We recommend carrying out an adhesion test.



Cut absorber to the required size



Apply acoustic adhesive



Lay absorbers with a gap of at least 20 mm

>> Notes on adhesion

We recommend carrying out an adhesion test, as the precise composition of the underlying surface must always be verified on site. Surfaces must be even, clean, dry, solid, stable and free of dust, oil and wax. In particular, wallpapers and coats of paint must be re-

moved. Surfaces with insufficient stability, e.g. loose plasters, must be undercoated using a commercially available primer thinned with water in a ratio of 1:1. Uneven surfaces must be smoothed.

Checklist [1/2]

Material

- ☐ willtec: melamine resin based soft foam. Building material class B1 (flame-retardant) according to DIN 4102. General test certificate issued by building authorities: P-NDS04-291.

Dimensions

- ☐ 1,250 x 625 x 35 mm
☐ 1,250 x 625 x 45 mm
☐ 1,250 x 625 x 65 mm

Version

- ☐ with bevel cut
☐ without bevel cut

Color

- ☐ white
☐ gray
☐ special color finish similar to visible side
 RAL _____

- ☐ S35sv: Polyester based polyurethane foam.
 With standard color coating B2 (flammable), without color coating B3 (highly flammable), according to DIN 4102.
 General test certificate issued by building authorities: P-NDS04-204
 Color: anthracite

Dimensions

- ☐ 1,000 x 1,000 x 45 mm
☐ 1,000 x 1,000 x 65 mm

Version

- ☐ with bevel cut
☐ without bevel cut

Color

- ☐ without color coating
☐ standard color coating (off-white)
☐ special color finish similar to visible side
 RAL _____

- ☐ willtec H: melamine resin based soft foam with hydrophobizing impregnation making it water and oil repellent, free from synthetic and natural mineral fibers, halogens and CFCs.
 Building material class B1 (flame-retardant) according to DIN 4102.
 General test certificate issued by building authorities: P-NDS04-197
 Color: gray, no color finish possible, homogeneity not guaranteed

Dimensions

- ☐ 1,250 x 625 x 35 mm
☐ 1,250 x 625 x 45 mm
☐ 1,250 x 625 x 65 mm

Version

- ☐ with bevel cut
☐ without bevel cut

>> | Note concerning SONEX A2

pinta SONEX A2 must be installed using pinta acoustic adhesive A2. The acoustic adhesive is supplied in 15 kg drums. Follow the adhesive instructions. We recommend carrying out an adhesion test.

- Shelf life: at least 24 months if stored in a dry place in sealed original packaging
- Adhesive bed thickness: max. 4 mm
- Usage temperature: +5° C to +25° C
- Consumption: approx. 1.5 to 2 kg/m² for whole-area adhesion (depending on the surface)

Checklist [2/2]

- ☐ willtec A2: melamine resin based soft foam with mineral impregnation, free from synthetic and natural mineral fibers, halogens and CFCs. Building material class A2 (non-combustible) according to DIN 4102. General test certificate issued by building authorities: P-NDS04-201.
- ☐ pinta acoustic adhesive A2
Single-component silicate special adhesive, for application to various non-combustible surfaces (see pinta ADHESIVES).

Color

- ☐ light gray (uncoated)
- ☐ anthracite (uncoated)
- ☐ standard color finish black
- ☐ standard color finish gray
- ☐ special color finish similar to visible side
RAL _____

Dimensions

- ☐ 1,250 x 625 x 35 mm
- ☐ 1,250 x 625 x 45 mm

Version

- ☐ with bevel cut
- ☐ without bevel cut

Adhesives

- ☐ pinta acoustic adhesive D
For porous surfaces such as concrete, mineral plasters, plasterboard, gypsum fibers and wooden particle boards.
- ☐ pinta acoustic adhesive S
For non-porous surfaces such as steel panels, trapezoidal sheet metal and PVC.

>> Contact / Enquiries

Witteveen Projectinrichting
Ouderkerk a/d Amstel
Tel: 020 - 496 5030
Fax: 020 - 496 3052
info@witteveen.nl
www.project-inrichting.nl
www.scheidingswand.net

pinta acoustic gmbh
Otto-Hahn-Straße 7
82216 Maisach, Germany
phone +49 (0)8141. 88 88-0
fax +49 (0)8141. 88 88-555