

# Strato\_2

acoustic ceiling clouds  
floating or embedded



## Composition

The **Strato\_2** modules are made of a high tech, low density foam (AM foam) inserted in a metal frame, ensuring a good resistance to shocks, temperature and humidity variations. They are upholstered in an **Aeria\*** fabric cover. The cover is removable.

## Acoustics

The fine porosity of the 50 mm AM foam combined with the sound transparency of the **Aeria** fabric envelope accounts for the exceptional level of acoustic absorption of the **Strato\_2** cloud, confirmed by laboratory tests.

A **Strato\_2** cloud also features the elimination of low angle or grazing incidence sound waves which usually run under large flat ceiling surfaces. The alveolar texture of **Aeria** creates a succession of waves under the modules and diffuses low angle waves, particularly towards the inner parts of the panel where they are absorbed.

## Installation

A **Strato\_2** cloud can be installed either floating (with or without peripheral L shaped borders) or embedded within a gypsum board ceiling.

The **Strato\_2** modules are available in 2 formats:

1 196 x 1 196 and 596 x 1 196 mm; thickness 50 mm [approx. 4'x4'x2" and 2'x4'x2"].

In the case of a embedded cloud, a 20 mm gap (minimum) around the perimeter is necessary for a smooth installation.

A hollow joint (4 mm) separates the elements.

Each module is positioned on a sturdy metal frame fitted with 4 hinges. A bent wrench is used to open the hinges as needed for easy removal of each element in order to access the plenum.



### \* Aeria

Textile knit patented by Texaa® - its strong texture reduces any possible tearing or fraying.

# Strato\_2

**Strato\_2** is a new generation acoustic solution based on **Texaa**<sup>®</sup> experience and know-how. It is sturdy and easy to install. Whether embedded or floating, in large dimensions or fragmented layers, the **Strato\_2** clouds offer the highest acoustic efficiency on the market.

Beyond its acoustic function, it can also highlight, structure and separate volumes of space. A **Strato\_2** cloud visually enhances a division within a room and, thanks to its **Aeria** envelope (available in 23 colors), introduces a touch of softness in all sorts of places and environments.

The texture and colors of a **Strato\_2** cloud are as pleasing to the eye as its acoustic effect is pleasing to the ear. The strict geometric grid of the modules contrasts with the soft contour and gentle central sag of the stretched **Aeria** covers.

The various components of **Strato\_2** provide fiber-free solutions suitable for environments where fiber-shedding materials are not approved. They are flame retardant and do not produce any incandescent droplets in case of fire.

## characteristics of the Strato cloud

### composition

**suspension framework** System of rails, stiffeners and metal hinges.

**frame of modules** Galvanized steel.

**absorbent** Low density AM foam and micro-porous cloth.

**décor** Sound transparent **Aeria** fabric knit, **Texaa**<sup>®</sup> patent.

Highly resistant to wear, tear and soiling.

Color selection: 23 colors.

**dimensions** 1196 x 1196 x 50 mm and 596 x 1196 x 50 mm.

<b>weight (kg/lbs)</b>	<b>single panel</b>	<b>framework/panel</b>	<b>total/panel</b>	<b>total/m<sup>2</sup></b>
1196x1196 mm [4'x4']	5.0 [11 lbs]	2.8 [6.2 lbs]	7.8/pnl. [17 lbs]	5.4/m <sup>2</sup> [1.1 lbs/ft <sup>2</sup> ]
596x1196 mm [2'x4']	3.7 [8.2 lbs]	1.7 [3.7 lbs]	5.4/pnl. [12 lbs]	7.5/m <sup>2</sup> [1.5 lbs/ft <sup>2</sup> ]

### acoustic efficiency

Good absorption in the low frequencies.

Versatility in positioning possibilities within the volumes

Acoustic results laboratory tested.

### fire safety

Fire retardant (M1). No production of incandescent droplets.

### hygiene

No shedding of fibers.

### light fastness

≥ 5 (scale of 1 to 8; standard ISO 105-B02).

### maintenance

A water/oil repellent coating protects against dust and soil.

Vacuum cleaner recommended every one to five years depending on local conditions.

### customer service

Technically qualified sales people.

### lead time

3-4 weeks.



The **Strato\_2** clouds are acoustically efficient, and they will also soften the ambiance of these rooms used by children.



# Embedded cloud

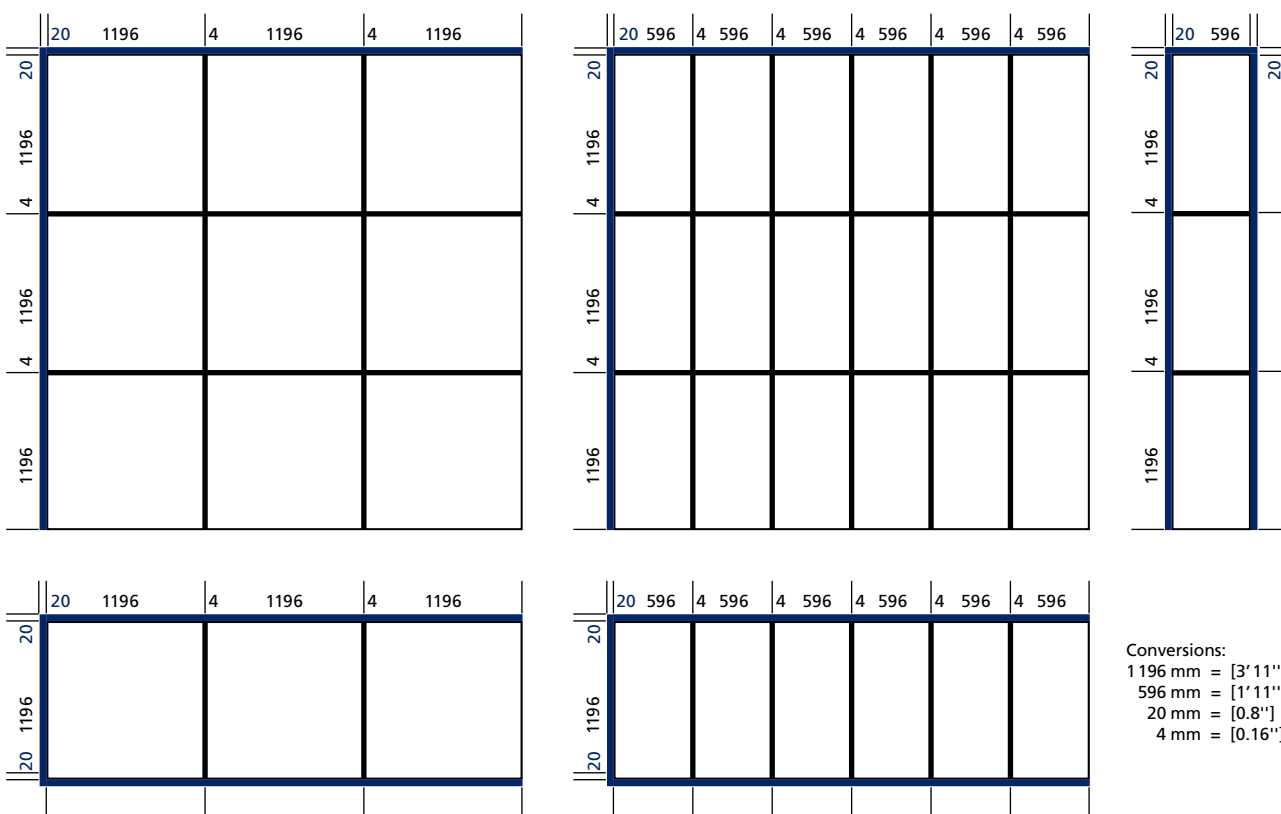
The **Strato\_2** cloud can be embedded in the ceiling. It features exceptional acoustic efficiency.

One of its unique features is in the absorption of low angle sound waves.

By contrasting against hard materials the **Strato\_2** cloud, with its texture and undulating effect, creates areas of quiet and produces a high level of cosiness and comfort.

## Caution!

In the case of embedded clouds, allow a 20 mm gap (minimum) around the perimeter.













No matter the shape of the room or its volume,  
the **Strato\_2** cloud brings a touch of softness within working spaces.





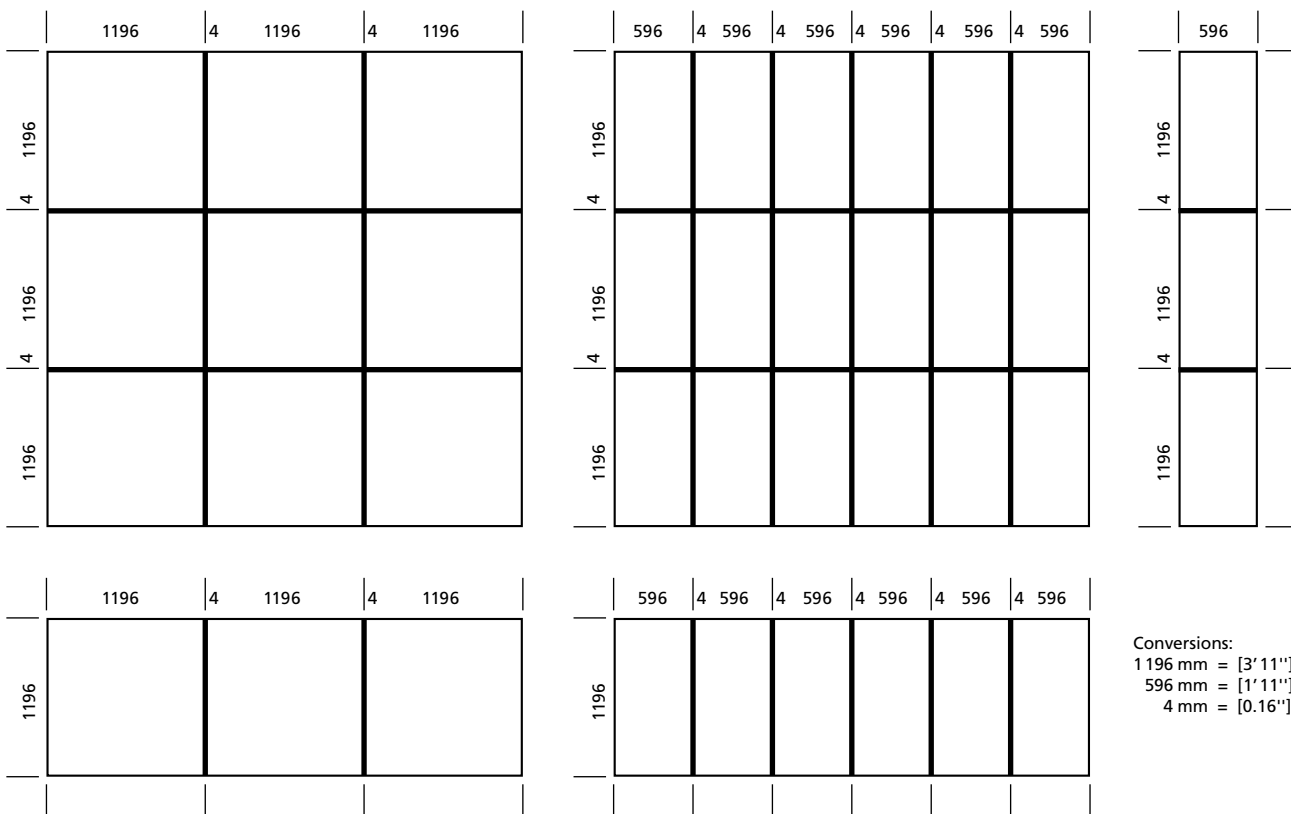
# Floating cloud without peripheral borders

The suspension points and the peripheral metal profiles of the **Strato\_2** framework are set in from the edge of the frame, inwards of the cloud, permitting installation of clouds without the need for peripheral L shaped borders.

The framework is invisible within a wide perimeter:

- up to a distance of 2.70 metres [9 ft], when the cloud is installed at a height of 2.50 metres [8 ft];
- up to a distance of 4.00 m. [13 ft], when the cloud is installed at a height of 3.00 m [10 ft].

It is also possible to install **Strato\_2** clouds without borders in single rows.



Each work group is protected from noise by its own cloud.



Strato\_2 easily blends with other surfaces or environments.



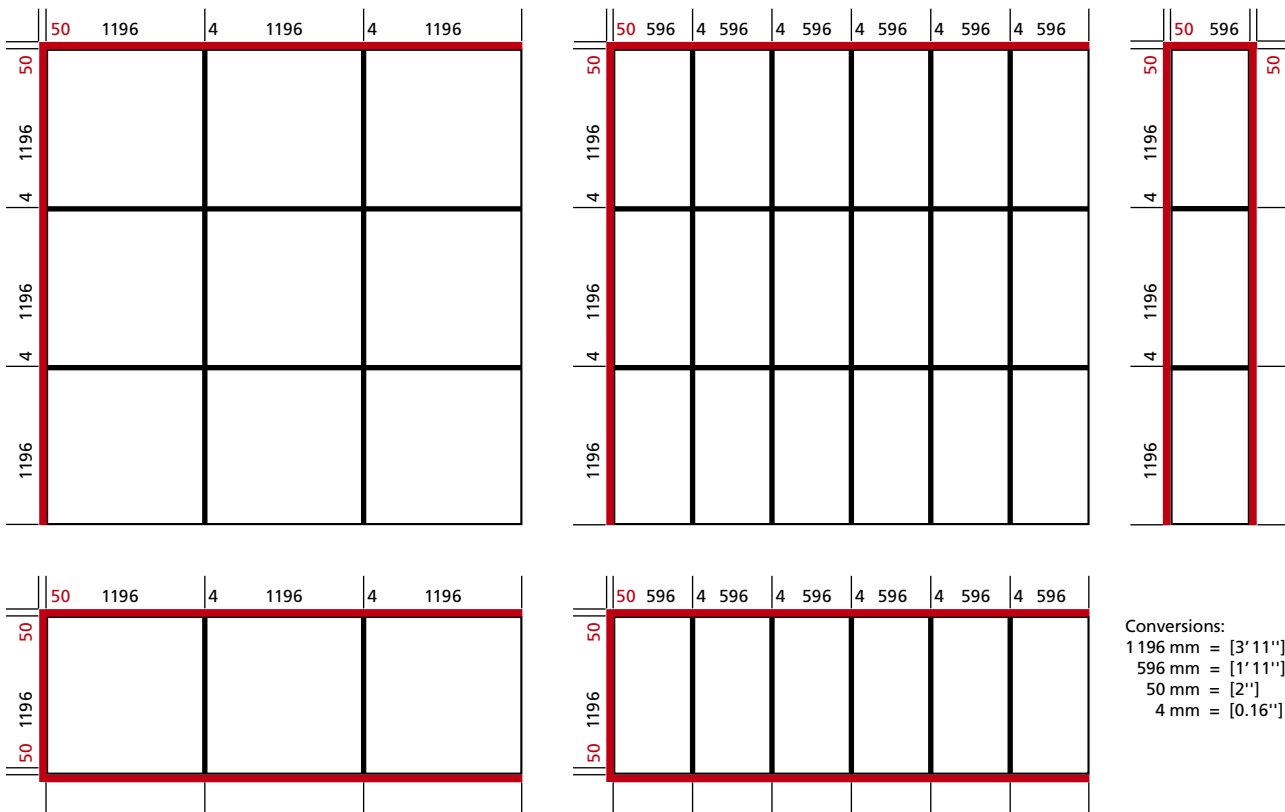
# Floating cloud with peripheral L shaped borders

An L shaped peripheral round border (100 mm) reinforces the impression of comfort of a **Strato\_2** cloud and enhances the impression of being self supported.

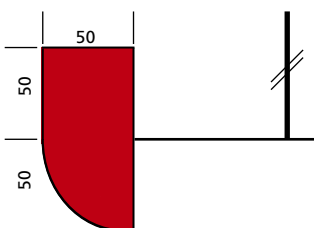
It allows the cloud to be closer to the user for optimum efficiency while still concealing the supporting framework.

## Caution!

The L shaped borders add 50mm to the dimensions of the peripheral modules.



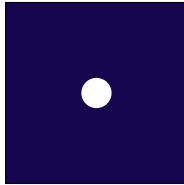
Conversions:  
 1196 mm = [3'11"]  
 596 mm = [1'11"]  
 50 mm = [2"]  
 4 mm = [0.16"]



## L shaped borders

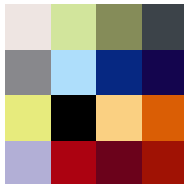
As an option, the **Strato\_2** modules can be supplied with peripheral borders whose profiles have been designed to "round" the assembly and conceal the framework.

# Optional...



## Pre-cut spacing for embedded lighting

The **Strato\_2** can be supplied with a metal plate with custom size cuts to allow for the integration of lights.



## Patchwork \_ Dare a rainbow patchwork ?

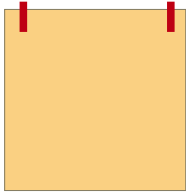
Special prices for this palette color mix!

As many colors as panels, up to 23 different colors.



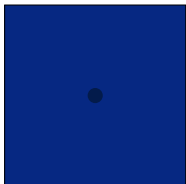


# Optional ...



## Suspension cables

The **Strato\_2** modules can be supplied with suspension cables. Recommended for high ceilings, they make access to the plenum easier.

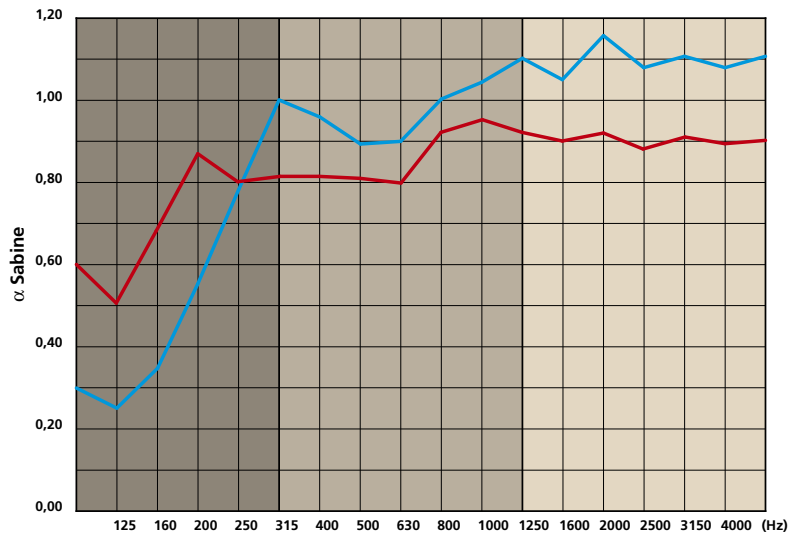


## Padded effect

The **Strato\_2** modules can be supplied with buttons which will modify the natural "sagging" (30 to 40 mm) of **Aeria**.



# Acoustic absorption



**floating cloud**  
(open plenum: 300 mm)

**embedded cloud**  
(closed plenum: 300 mm)

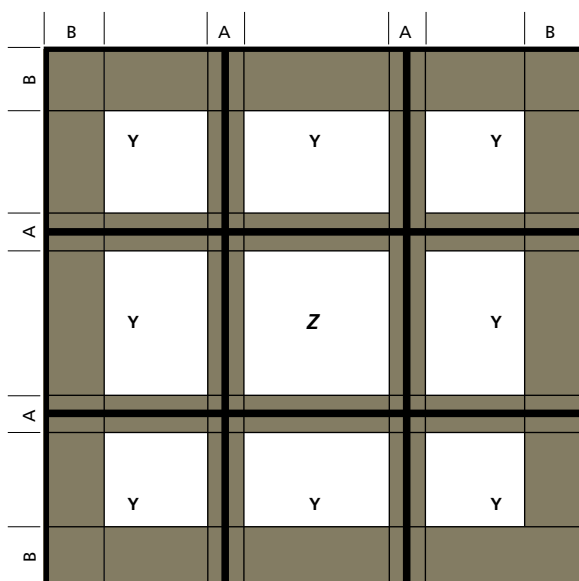
Frequencies (Hz)	125	250	500	1000	2000	4000	$\alpha_w$	class	NRC
floating cloud	0.26	0.77	0.88	1.04	1.15	1.08	1	A	1.00
embedded cloud	0.48	0.81	0.82	0.96	0.92	0.89	0.9	A	1.00

Acoustic test reports available on request (Standard ISO 354).

The addition of lighting fixtures may affect the acoustic performance of the modules. Please contact us for further information.

----

## Option: pre-cut spacing for embedded lighting



The **Strato\_2** modules are fitted with a custom pre-cut metal plate to allow for embedded lighting.

The components of the framework do not allow the light fixtures to be placed in the indicated grayish areas:

	cloud 1200 x 1200 mm [4'x4']		cloud 600 x 1200 mm [2'x4']	
	with borders	without borders	with borders	without borders
A	100 mm	100 mm	100 mm	100 mm
B	410 mm	360 mm	410 mm	360 mm

Maximum dimensions for **centrally** positioned light fixtures:

	cloud 1200 x 1200 mm [4'x4']		cloud 600 x 1200 mm [2'x4']	
	with borders	without borders	with borders	without borders
Y	480 mm	480 mm	(impossible)	(impossible)
Z	1110 mm	360 mm	410 mm	410 mm

# Typical specification sheet

## Acoustic ceiling cloud **Strato\_2** by Texaa®

### Installation contacts: ceiling contractors.

A **Strato\_2** ceiling cloud by Texaa® will be suspended to a framework supplied by the manufacturer.

Its individual panels are made of:

- a metal frame with 4 fixing bolts,
- an acoustic absorber (AM foam & micro-porous cloth),
- a removable **Aeria\*** fabric stretch cover.

Color as per architect's specification to be selected from **Aeria** round knit color chart (*ref. décembre*).

Each component should have an M1 fire rating and not produce incandescent droplets.

A hollow joint of 4 mm will separate the panels. The panels should be removable with a bent spanner.

### Acoustic characteristics

	$\alpha_w$	class	NRC
floating cloud	<b>1</b>	<b>A</b>	<b>1.00</b>
embedded cloud	<b>0.9</b>	<b>A</b>	<b>1.00</b>

### Cloud n°1

- Installation [select] : \_\_\_ [embedded]  
or : \_\_\_ [floating without borders]  
or : \_\_\_ [floating with L shaped borders]
- Dimensions of the modules [select] : 1 196 x 1 196 x 50 mm [3'11" x 3'11" x 2"]  
or : 596 x 1 196 x 50 mm [1'11" x 3'11" x 2"]  
(for the cloud with L shaped borders: + 50 mm at the peripheral modules).
- Number of modules : \_\_\_
- Dimensions of the cloud : \_\_\_  
(for the embedded cloud: hollow gap of 20 mm in the periphery).

### Cloud n°...

-----

### Options :

- \_\_\_ [number] modules will be fitted with pre cut metal plates for light fixtures.  
(indicate dimensions of requested prepared spaces and their position on modules).  
The light fixtures must be suspended from ceiling and will not rest on modules.
- Each module can be fitted with a button for "padded effect".
- Each module can be fitted with suspension cables.
- Each cloud can be "patchworked".

\* Texaa® patent

**Texaa**<sup>®</sup>

**Textile and Acoustics**

43, allée Mégevie

F-33174 Gradignan

Tel.: +33 (0)5 56 75 71 56

Fax: +33 (0)5 56 89 03 56

E-mail: [contactus@texaa.fr](mailto:contactus@texaa.fr)

[Http://www.texaa.com](http://www.texaa.com)

Witteveen Projectinrichting

Ouderkerk a/d Amstel

Tel: 020 - 496 5030

Fax: 020 - 496 3052

[info@witteveen.nl](mailto:info@witteveen.nl)

[www.project-inrichting.nl](http://www.project-inrichting.nl)

[www.scheidingswand.net](http://www.scheidingswand.net)

References shown:

- > Library, Issy-les-Moulineaux.
- > Kindergarten, Paris.
- > School canteen, School of Andresy. G. Le Penhuel, arch.
- > Call Centre, EDF, Paris. P. Marinescoux, arch.
- > Offices, Paris. MM. Sahuc and Katchoura, arch.
- > Open space offices, Moët-Hennessy-Sephora, Boulogne: N. Debeney. Agency Studios Architecture, arch.
- > Open offices, EDF, Marseille: R. Manavella. B.E. Acson: D. Laforet, acoustician.
- > Meeting room, Paris. Agency Taïeb-Bigeault, arch.
- > Corporate Restaurant, Toulouse. Atelier d'Architecture Cardete Huet: M. Cardete, arch.
- > Texaa, Gradignan. Agency Triaud & Arsène-Henry: A. Triaud, arch.

photographers: Bertrand Genier, Bernard Collet, S. Demailly, Alain Benoit, DR  
printers: BM - ZI 33610 Canéjan  
June 2004

