



HÅG Tion

Collection Swatch Guide



This Swatch guide book for HÅG Tion is meant to represent the uniquely curated selection of materials available for the chair. To inspire and give an example of the textural depth within the range of the collection. HÅG Tion is not only highlighted for its adaptability for home office use, but it really stands out for its ability to match our personalities. The variety of combinations that can be created with the HÅG Tion has unlimited potential to blend with our individual characters but also the space we inhabit.

Our personal design team at Flokk has collaborated with Studio Hunting & Narud to create a satisfy collection showcasing the potential of the HÅG Tion. With this intention the selection of fabrics and materials in this core collection were chosen with sustainability in mind. Explore for yourself the expansive material selections available with HÅG Tion.

HÅG

www.flokk.com



TABLE OF CONTENT

SWATCHES	Overview of all choices	5
SIRDAL	100% Virgin Norwegian wool	7
CURA	98% post-consumer recycled polyester. 2% polyester	9
SISU	91% Norwegian wool. 8% New Zealand wool. 1% polyamide	11
ELMO SOFT	Leather hides by-products of Scandinavian meat & dairy industry	12
FOCUS MELANGE	100% New Zealand wool	13
MAINLINE FLAX	75% Virgin Wool. 25% Flax	14
OCEANIC	100% post-consumer recycled polyester. 50% SEAQUAL yarn	15
PLASTIC COLOURS	94% post-consumer plastics	16
WOOD	Ash Variety	17
ALUMINIUM FINISHES	97 - 98% Recycled Aluminum	18
LIFT FINISHES	150mm and 200mm lengths	19
DESIGNERS	About Hunting & Narud	21
RECOMMENDATIONS	Curated by Hunting & Narud	23





SRD630



SRD320



SRD960



SRD480



SRD120



SRD190



(E)

SRD210



SRD780

SIRDAL

GUDBRANDSDALENS
ULDVAREFABRIK

Seat. Backrest.

Sirdal is part of the 100% Norwegian wool trio Sirdal, Suldal and Setesdal. These fabrics are uniquely short-travelled in every part of the process – 100% pure Norwegian wool manufactured in Norway. Norwegian wool with its distinctive brilliance, resilience and durability is expressed through rich structures that evoke authenticity paired with chic and modern comfort.

Composition: 100% Virgin Norwegian wool

Abrasion resistance: 57 000 Martindale (EN ISO 12947-2)

Flammability: BS EN 1021: 1-2 (Cigarette & match), IMO FTP code 2010: Part 8

Light fastness: 5-7 (EN ISO 105-B02)

Rubbing fastness: 4/4-5 (Wet/Dry) (EN ISO 105X12)

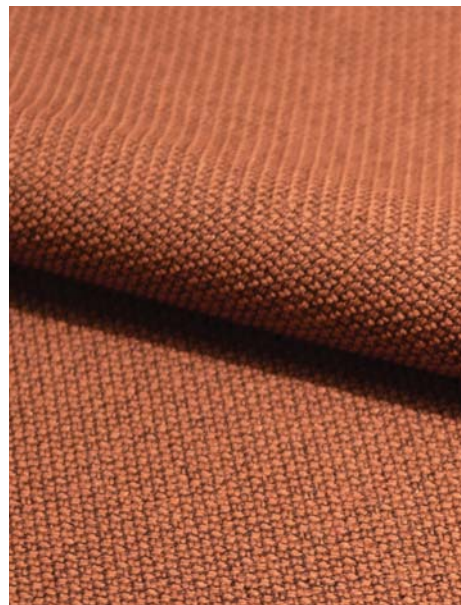
Pilling: 3-4 (EN ISO 12945-2)

Environmental facts: Locally produced, 100% free of heavy metals, ISO 14001 certified company

Design: GU Design team/Ragnhild Nordhagen, Flokk Design team/Pernille Stoltze

Produced in: Norway

Cleaning: Professional dry cleaning (For further info follow GU's cleaning guidelines – www.gu.no)



(E)

CU61257



(E)

CU62083



(E)

CU68261



(E)

CU61258



(E)

CU60112



CU60999



CU66165

CURA

GABRIEL

Seat. Backrest.

Cura is a two-coloured fabric made from 98% post-consumer recycled polyester. It has a matt, slightly irregular and natural-looking texture where the dark, underlying grey fibers create a discreet yet vibrant melange effect. High durability and stretchability and its soft, voluminous touch make Cura suitable for both office and lounge furniture.

Composition: 98% post-consumer recycled polyester, 2% polyester

Abrasion resistance: 100 000 Martindale (EN ISO 12947-2)

Flammability: BS EN 1021: 1-2, BS 5852 0&1, CA TB 117-2013, ASTM E 84 Class I

Light fastness: 5-8 (EN ISO 105 - B02)

Rubbing fastness: 4-5/4-5 (Wet/Dry) (EN ISO 105X12)

Pilling: 4-5 (EN ISO 12945-2)

Environmental facts: EU Ecolabel, Oeko-Tex® Standard 100, Contains no Flame Retardant chemicals, ISO 14001 certified company

Design: Cenk Kivrikoglu

Produced in: Lithuania

Cleaning: Wash or dry cleaning, Can be disinfected with ethanol and is bleach-cleanable (For further info follow Gabriel's cleaning guidelines – www.gabriel.dk)



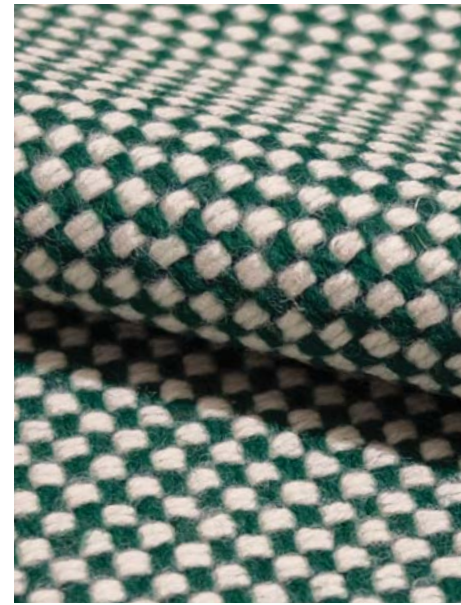
(E)

SIS805



(E)

SIS405



(E)

SIS165

Sisu is a chequered woolen textile designed by the celebrated designer Nanna Ditzel, which links to the iconic textile Hallingdal created in 1965. The expression of Sisu is reminiscent of looking at Hallingdal through a magnifying glass. The textile is woven with thick, voluminous woollen yarns and features a bold yet subtle, checked pattern. Blocks of colour play across its surface, rising to tactile, rhythmic effect.

Composition: 91% new Norwegian wool 8% new New Zealand wool 1% polyamide

Abrasion resistance: 70 000 Martindale (EN ISO 12947-2)

Flammability: BS EN 1021: 1-2 (Cigarette & match), AS/NZS 3837 Class 2, BS 5852 part 1, CA TB 117-2013, IMO FTP Code 2010 Part 8, BS 5852 Crib 5 with treatment, NF D 60 013, UNI 9175 1IM.

Light fastness: 7 (EN ISO 105-B02)

Rubbing fastness: 4-5/4-5 (Wet/Dry) (EN ISO 105X12)

Pilling: 3-4 (EN ISO 12945-2:2020)

Environmental facts: 100% free of heavy metals, ISO 14001 certified company, Greenguard Gold

Design: Nanna Ditzel, curated by artist Danh Vo.

Produced in: Norway

Cleaning: Professional dry cleaning with tetrachloroethylene, normal process (For further info follow Kvadrat's cleaning guidelines – www.kvadrat.dk)



EL33004

Elmosoft is a chrome free supreme quality semi-aniline grain leather from Scandinavian cattle. It is soft and pliable with an outstanding comfort and durability. Visible insect-bites and scars from healed wounds add to the authentic quality and character of the leather.

Animal Welfare: All hides are by-products from the meat and dairy industries with traceability back to the farm, Following strict regulations on animal welfare in compliance with national and international standards as those issued by the World Organization for Animal Health (6 animal welfare freedoms)

Flammability: BS EN 1021: 1-2 (Cigarette & match), BS 5852 Crib 5, CA TB 117-2013, DIN 4102 -1 (B1), IMO 2010 FTP Code Part 8 (IMO652), UNI 9175, Önorm B 3825, UNI 9175

Light fastness: 6 (EN ISO 105-B02)

Rubbing: Wet 80/4 - Dry 2000/4 - Sweat 50/4 - ISO 11640

Finish-adhesion: ≥ 2 N/cm - ISO 11644

Tear-strength: ≥ 20 N/cm DIN 53329-A

Environmental facts: 100% free of heavy metals, tanned without using chromium salts, ISO 14001 certified company, Clean water tanning technology with biological Water Treatment Plant and 100% CO2 neutral on energy.

Produced in: Sweden

Cleaning: (Follow the guidelines by our supplier – www.elmoleather.com)



(E)

FCM60309

Focus Melange is a woven felt fabric made of 100% long-staple worsted wool. It has an ultra soft and satiny touch combined with high strength obtained by use of high-quality worsted wool yarn and careful production processes. In addition to high durability, the fabric does not pill and will remain attractive over time regardless of wear and tear. The equal thickness between the warp and weft yarn give a harmonious and symmetric melange colour expression.

Composition: 100% New Zealand wool

Abrasion resistance: 100 000 Martindale (EN ISO 12947-2)

Flammability: BS EN 1021: 1-2 (Cigarette & match), BS 5852 Part 1 0.1 Cigarette and match, CA TB 117-2013, Class Uno UNI 9175 Class 1 | EMME, ÖNORM A33800-B1-B33825-Q1UK

Light fastness: 5-7 (EN ISO 105-B02)

Rubbing fastness: 4-5/4-5 (Wet/Dry) (EN ISO 105X12)

Pilling: 4 (EN ISO 12945-2)

Environmental facts: EU Ecolabel, 100% free of heavy metals and harmful chemicals, biodegradable, Oeko-Tex® Standard 100, ISO 14001 certified company

Design: Inger Mosholt Nielsen, colours Cenk Kivrikoglu

Produced in: Lithuania

Cleaning: Professional dry cleaning (For further info follow Gabriel's cleaning guidelines – www.gabriel.dk)

MAINLINE FLAX

CAMIRA

Seat. Backrest.



(E)

MLF12

Mainline Flax is the natural progression of our all time favourite Main Line Plus fabric, building on our industry leading bast fibre expertise to create a new inherently flame retardant fabric from sustainable sources. A symbol of purity, wild flax has been used in textiles for thousands of years thanks to its strong, long and smooth fibres found inside the stem of the plant. The fibre is spun into a 75/25 wool flax blend, then fibre dyed to create beautiful mixture yarns which are woven into interesting solids and cross-colours inspired by the rich tones of rare jewels.

Composition: 75% Virgin Wool, 25% Flax

Abrasion resistance: > 50 000 Martindale (EN ISO 12947-2)

Flammability: BS EN 1021: 1-2 (Cigarette & match), BS 7176 Low & Medium Hazard, BS 5852 Crib 5, CA TB 117-2013, IMO FTP Code (Part 8), UNI 9175 Classe 1 IM

Light fastness: 5 (EN ISO 105-B02)

Rubbing fastness: 3/4 (Wet/Dry) (EN ISO 105X12)

Pilling: 4 (EN ISO 12945-2)

Environmental facts: EU Ecolabel, Indoor Advantage™ "Gold", 100% free of heavy metals, ISO 14001 certified company, Rapidly renewable and compostable

Design: Camira Design Studio

Produced in: United Kingdom

Cleaning: Professional dry cleaning (For further info follow Camira's cleaning guidelines – www.camirafabrics.com)

OCEANIC

CAMIRA

Seat. Backrest.



(E)

OCI001

Oceanic is made from 100% post-consumer recycled polyester yarn where 90% are created from post-consumer plastic bottles diverted from landfill and 10% is up-cycled marine plastic (from marine litter). It is a fabric born out of the SEAQUAL Initiative designed to combat marine plastic pollution and achieve a waste free environment. Oceanic has a two coloured diagonal structure with a matte surface and soft touch.

Composition: 100% post-consumer recycled polyester, including 50% SEAQUAL yarn

Abrasion resistance: >100 000 Martindale (EN ISO 12947-2)

Flammability: BS EN 1021: 1-2 (Cigarette & match), BS 7176 Low, BS 7176 Medium Hazard with EnviroFlam5, CA TB 117-2013

Light fastness: 5 (EN ISO 105 - B02: 2013)

Rubbing fastness: 4/4 (Wet/Dry) (EN ISO 105X12)

Pilling: 4 (EN ISO 12945-2)

Environmental facts: Oeko-Tex® Standard 100, Indoor Advantage™ "Gold", non metallic dyestuffs, ISO 14001 certified company.

Design: Camira Design Studio

Produced in: United Kingdom

Cleaning & disinfection: Washable at 60 °C and bleach cleanable (For further info follow Camira's cleaning guidelines – www.camirafabrics.com)

COLOUR PLASTIC

Seat. Backrest.

The HÅG Tion represents our first design featuring recycled plastics in an inspiring range of colour options. The introduction of colour sorted post-consumer plastics into our value chain is a major breakthrough, making it even easier to be colourful and environmentally conscious.

94% post-consumer plastics



Moss



Harvest



Blush



Chestnut



Black



Crowberry



Mist

WOOD

Seat. Backrest.



Ash

The wood option available will be a white washed finish of the Ash variety. Made using responsibly sourced timber.



ALUMINIUM FINISH

Armrest. Footbase. Backstem.

The metal parts consists mainly of recycled aluminium. The colour of these metal parts are finished in five different powder coated colours. In addition there are two non painted finishes that are a polished and tumbled treated. The tumbled finish is a new method included into our production that highlights the textural depth of the recycled aluminium with a unique and crafted quality.

97% to 98% recycled aluminium.



Moss Grey



Silver



Black



Blush Rose



White



Tumbled



Polished

LIFT FINISH

Gas lift.

The gas lifts have a much more smooth finish compared to the other parts of the chair. Available in the following colours to match the aluminium parts.



Moss Grey



Silver



Black



Blush Rose



White



DESIGNERS

Amy Hunting & Oscar Narud



Amy Hunting and Oscar Narud are the pair that make up the studio Hunting & Narud, and they were involved with the HÅG Tion project right from the beginning. Through a series of workshops and a close collaboration with Anderssen & Voll and Big Game, the trio of studios along with the Flokk design team had collectively arrived on the design of HÅG Tion.

A circular intention of material decisions formed the foundation that inspired the combinations for HÅG Tion. Amy and Oscar say with a tone of enthusiasm that, “We had really pushed and explored colour options with recycled plastics and we are so pleased we could get such a huge range. So much work has gone into this development and learning about recycled plastics and their qualities has been incredibly useful. Flokk’s work with sustainability and recycled materials is impressive.”

Amy and Oscar collaborating closely with Flokk’s design team had employed a very conscious effort in curating a collection that highlights our sustainable materials. Choices that aim to capture and satisfy the full spectrum of environments where the chair will function in.

“HÅG Tion is a chair that should not feel too corporate, too sterile or too bland. So often colours from industrial products are taken from a RAL chart without a narrative. For HÅG Tion’s palette, we thought it was important to draw inspiration from domestic settings and homes. To make sure the chair could have these qualities we have researched and studied interior colour palettes from English heritage until modern times. The result is a range of colours with a nod to domestic settings that hopefully stand the test of time.”



Recommended Alternatives:
Seat also available in
Cura, Gabriel. CU62083

And also in the harvest colour
plastic used in the backrest.



Plastic



Harvest

Sirdal

SRD320



Aluminum

White



Lift

White

Recommended Alternatives:
Seat also available in
Sirdal, GU. SRD780

And also in the Crowberry colour
plastic used in the backrest.



Plastic



Crowberry



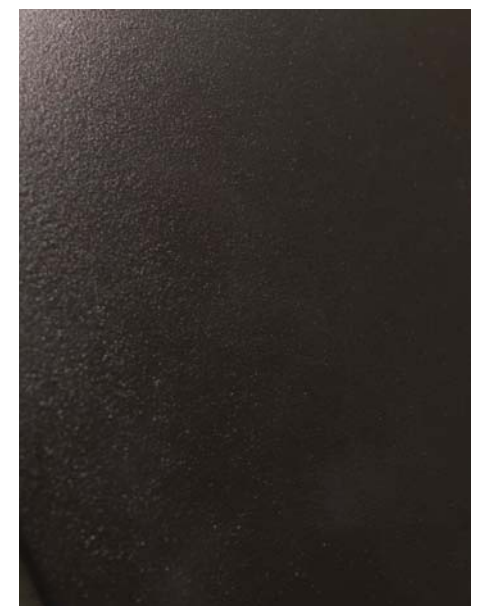
Cura

CU66165



Aluminum

Black



Lift

Black





Sirdal

SRD630



Plastic

Blush

Recommended Alternatives:
Seat also available in
Cura, Gabriel. CU61257

And also in the blush colour
plastic used in the backrest.



Aluminum

Blush Rose



Lift

Blush Rose





Sirdal

SRD210



Plastic

Mist

Recommended Alternatives:
Seat also available in
Cura, Gabriel. CU60112

And also in the mist colour
plastic used in the backrest.



Aluminum

White



Lift

White





Sirdal

SRD960



Plastic

Moss

Recommended Alternatives:
Seat also available in
Cura, Gabriel. CU68261

And also in the moss colour
plastic used in the backrest.



Aluminum

Moss Grey



Lift

Moss Grey





Sirdal

SRD190



Plastic

Black

Recommended Alternatives:
Seat also available in
Cura, Gabriel. CU60999
Oceanic, Camira. OC1001

And also in the black colour
plastic used in the backrest.



Aluminum

Black



Lift

Black





Aluminum



Polished

Aluminum

Tumbled



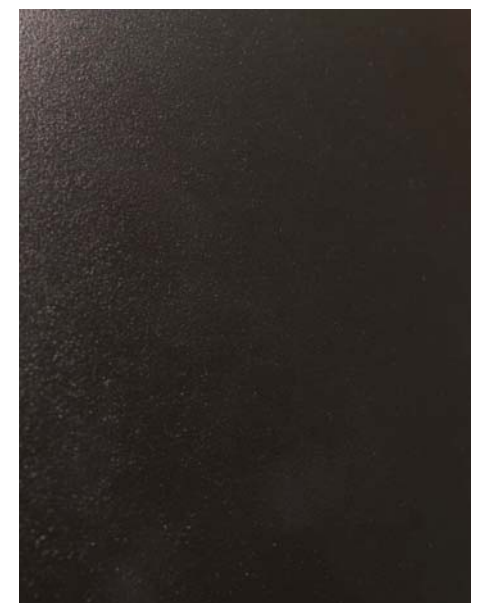
Elmosoft

EL33004



Aluminum

Black



Lift

Black



Aluminum



Tumbled

Plastic



Mist

Focus Melange (E)

FCM60309



Lift

Silver



Wood



Ash

Mainline Flax (E)

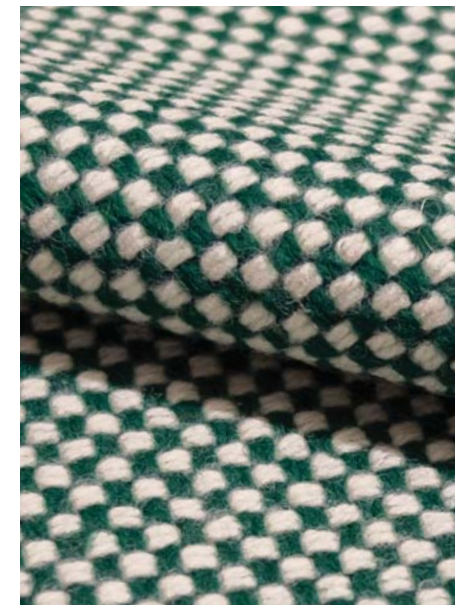
MLF12





Sisu (E)

SIS405



Sisu (E)

SIS805



Sisu (E)

SIS165



Plastic

Harvest



Aluminum

Moss Grey



Aluminum

Blush Rose



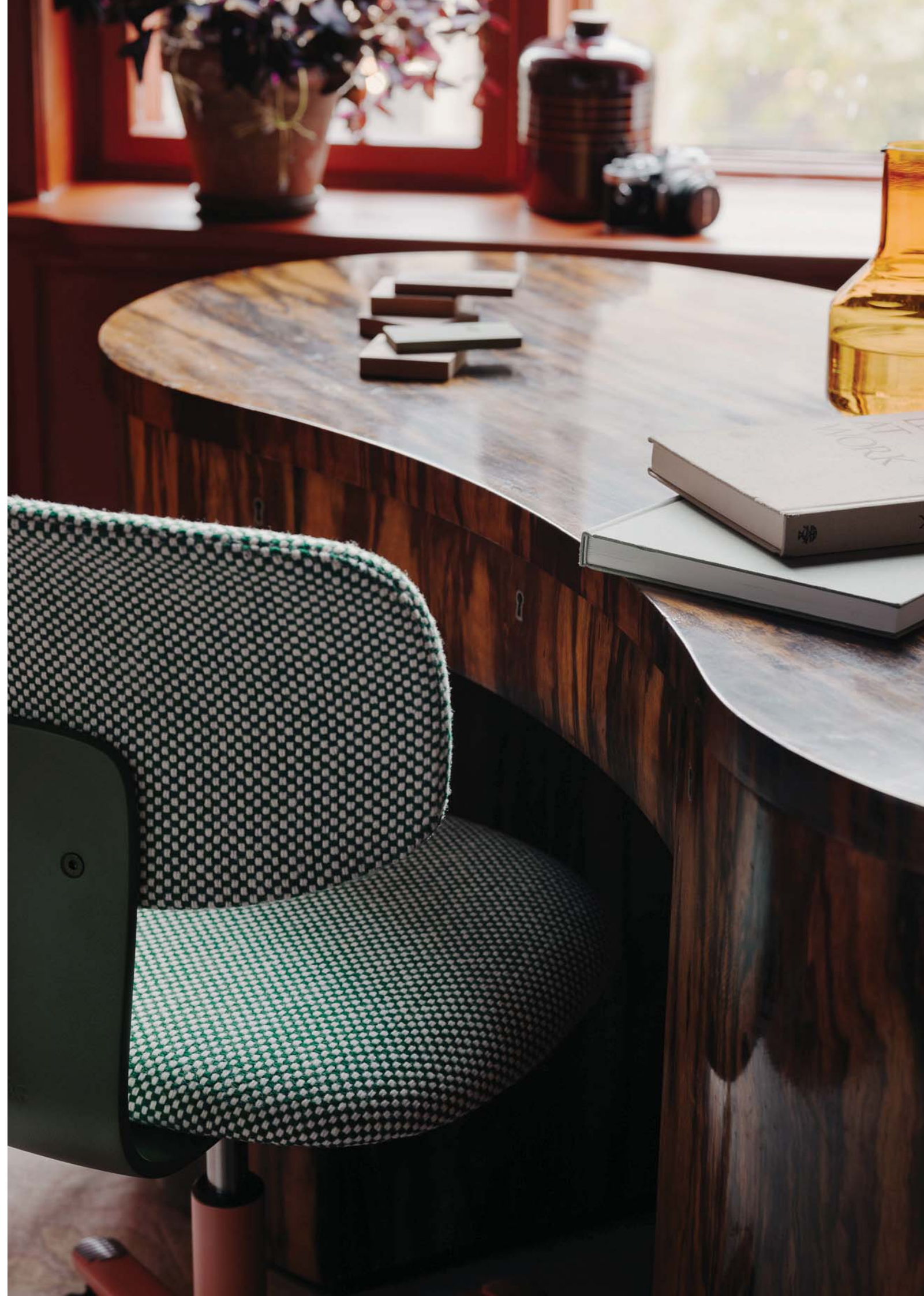
Lift

Moss Grey



Lift

Blush Rose





HAG





Witteveen Projectinrichting
Ouderkerk a/d Amstel
Tel: 020 - 496 5030
info@witteveen.nl
www.ergo-burostoel.nl
www.project-inrichting.nl