

# Synergy

camira



**Congregate**  
LDS83



**Affinity**  
LDS74



**Fate**  
LDS07



**Venture**  
LDS05



**Mutual**  
LDS84



**Likeness**  
LDS82



**Work**  
LDS73



**Fellowship**  
LDS66



**Share**  
LDS85



**Similar**  
LDS81



**Contribution**  
LDS75



**Compose**  
LDS72



**Warmth**  
LDS67



**Global**  
LDS86



**Apt**  
LDS80



**Success**  
LDS76



**Open**  
LDS71



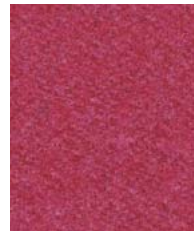
**Collaborate**  
LDS68



**Values**  
LDS87



**Combo**  
LDS77



**Medley**  
LDS36



**Process**  
LDS88



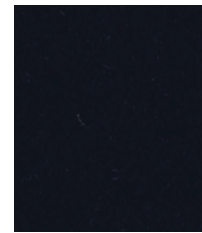
**Amiable**  
LDS79



**Cordial**  
LDS78



**Together**  
LDS70



**Sync**  
LDS69

Photographic fabric scans are not color accurate. Always request actual fabric samples before ordering.



**Huddle**  
LDS65



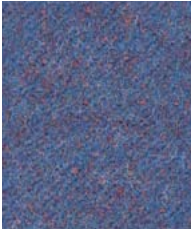
**Support**  
LDS55



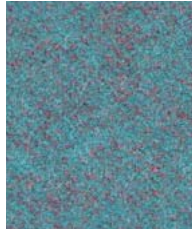
**Regard**  
LDS54



**Summon**  
LDS45



**Order**  
LDS64



**Kinship**  
LDS56



**Pact**  
LDS53



**Gather**  
LDS46



**Relate**  
LDS44



**Guild**  
LDS63



**Engage**  
LDS57



**Comply**  
LDS52



**Integrate**  
LDS47



**Lateral**  
LDS28



**Family**  
LDS58



**Kindness**  
LDS51



**Interfuse**  
LDS48



**Alike**  
LDS62



**Group**  
LDS59



**League**  
LDS50



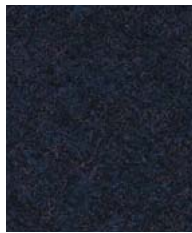
**Append**  
LDS49



**Marry**  
LDS43



**Assemble**  
LDS61



**Accord**  
LDS60



**Couple**  
LDS41



**Intertwine**  
LDS42

Photographic fabric scans are not color accurate. Always request actual fabric samples before ordering.



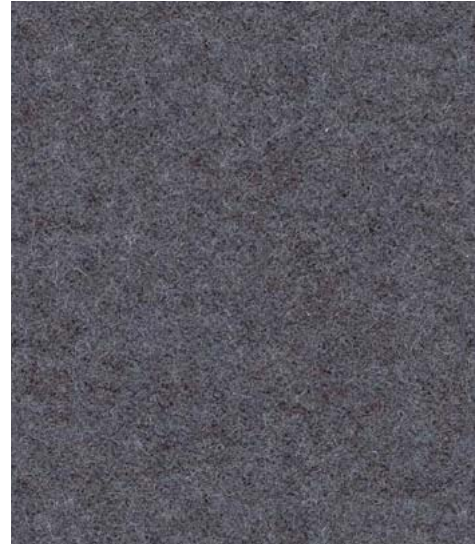
**Loop**  
LDS18



**Bracket**  
LDS23



**Chain**  
LDS19



**Chemistry**  
LDS35



**Affix**  
LDS32



**Serendipity**  
LDS08



**Frame**  
LDS22



**Tag**  
LDS33



**Partner**  
LDS16



**Level**  
LDS20



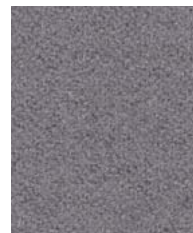
**Team**  
LDS21



**Linea**  
LDS37



**Unity**  
LDS38



**Pair**  
LDS31



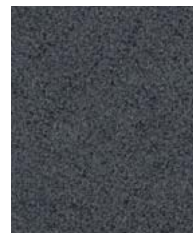
**Bond**  
LDS24



**Collective**  
LDS39



**Mix**  
LDS17



**Hook**  
LDS29



**Compound**  
LDS25



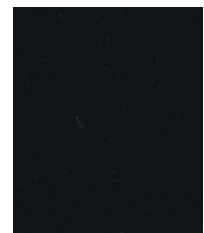
**Co-operate**  
LDS40



**Bridge**  
LDS26



**Wed**  
LDS34



**Seek**  
LDS27



Task seating



Lounge seating



Panels



Year guarantee

2+2 = 75. Where the total is more than the sum of the parts. Say hello to Synergy, a soft handle wool blend fabric, featuring exquisite fiber dyed shades and sumptuous piece dyed solids. It all comes together to provide our largest color offering of 75 intelligent shades.

We have partnered with Just A Drop, the international water aid charity, and for every yard of fabric we sell, we will make a donation to a specific project around the world, helping to provide clean and safe water to those in need.



Synergy meets the ACT voluntary Performance Guidelines and is classified for Heavy Duty Upholstery.



## Technical information

### EN

#### Composition

95% Pure New Wool, 5% Nylon

#### Environment

Certified to the EU Ecolabel  
Certified to Indoor Advantage™ Gold

#### Width

54 inches minimum

#### Weight

11<sup>3/4</sup> oz/sq yd ±5% (17<sup>3/4</sup> oz/running yd ±5%)

#### Abrasion Resistance\*

D4966 Martindale method, Heavy Duty Upholstery  
Independently certified to ≥100,000 cycles  
Covered by a full and comprehensive 10 year guarantee (full details available)

#### Flammability

California Technical Bulletin 117 - 2013  
NFPA 260 + UFAC - Class 1  
BS 7176 Low Hazard  
ASTM E84 Class 2 or B (Adhered)  
ASTM E84 Class 2 or B (Un-adhered)  
**Optional please specify when ordering:**  
ASTM E84 Class 1 or A (Adhered) when FR treated  
*Note: Flammability performance is dependent on components used. Our certificates show what substrates have been used in our tests. For composite tests customers must ensure their complete furniture meets the necessary standards.*

#### Color Fastness to Light

AATCC-16 (40 hours) Class 4

#### Color Fastness to Crocking

AATCC-8 (Dry: 4, Wet: 3)

#### Cleaning

W/S  
Clean with a water-based cleaning agent or solvent:  
Depending on the stain, you can use a dry-cleaning solvent, the foam of a mild detergent, or upholstery shampoo.

\*Camira recognizes that the number of Martindale cycles do not reflect the actual wear performance of fabrics. We're so confident in the durability of our products that we provide a robust 10 year guarantee (full details available). This product is externally certified, details of which are on our website and available from our customer services team.

Multiple factors affect fabric durability and appearance retention, including end-user application and correct maintenance. Results above 100,000 cycles have not been shown to be a reliable indicator of increased fabric lifespan.

Batch to batch variations in shade may occur within commercial tolerances. We reserve the right to alter technical specifications without notice. The Unregistered Design Rights and the Copyright in all designs are the exclusive property of Camira Fabrics Limited.

### F

#### Composition

95% Pure Laine Vierge, 5% Nylon

#### Écologique

Avec le certificat EU Ecolabel  
Certifié à Indoor Advantage™ Gold

#### Largeur

54 pouces minimum

#### Poids

11<sup>3/4</sup> oz/sq yd ±5% (17<sup>3/4</sup> oz/lin.yd ±5%)

#### Résistance à l'abrasion\*

D4966 Martindale method, Heavy Duty Upholstery  
Certificat indépendant ≥100,000 cycles  
Avec une garantie totale de durabilité de 10 ans (renseignements complémentaires disponibles)

#### Flammabilité

California Technical Bulletin 117 - 2013  
NFPA 260 + UFAC - Class 1  
BS 7176 Low Hazard  
ASTM E84 Class 2 or B (Adhered)  
ASTM E84 Class 2 or B (Un-adhered)  
**Prière de le mentionner lors de la commande:**  
ASTM E84 Class 1 or A (Adhered) si traitement FR  
*Notez: La performance de flammabilité dépend des composantes utilisées. Nos certificats indiquent les substrats utilisés dans nos tests. Pour les tests composites, les clients doivent s'assurer que leurs meubles complets satisfont aux normes nécessaires.*

#### Solidité à la Lumière

AATCC-16 (40 heures) Class 4

#### Solidité à la Crocking

AATCC-8 (Sec: 4, Mouillé: 3)

#### Nettoyage

W/S  
Nettoyer avec un produit d'entretien à base d'eau: en fonction de la tâche, vous pouvez nettoyer à sec, à l'aide d'un détergent ou bien avec du shampooing pour meubles.

\*Camira reconnaît que le nombre de Martindale cycles ne reflète pas la performance de l'usure réelle des tissus. Nous sommes tellement confiants dans la pérennité de nos produits que nous offrons une garantie solide de 10 ans (plus de détails disponibles). Cette gamme est certifiée externe, vous pouvez d'ailleurs trouver plus de détails sur notre site internet ou en contactant un membre de notre Service Clients.

La durabilité d'un tissu et sa capacité à conserver son aspect sont affectées par divers facteurs, y compris son environnement d'installation et son entretien. Un résultat de 100 000 ou plus (Martindale) n'est pas un indicateur fiable quant à la longévité d'un tissu.

Une variation de couleurs peut provenir (commerciallement tolérable). Nous réservons le droit de changer les spécifications techniques sans préavis. Les Droits de Conception non-enregistrés et les droits d'auteur de tous les motifs sont la propriété exclusive de Camira Fabrics Limited.

### ES

#### Composición

95% Pura Lana Virgen, 5% Nylon

#### Ambiental

Certificado con EU Ecolabel  
Certificado de Indoor Advantage™ Gold

#### Ancho

54 pulgadas mínimo

#### Peso

11<sup>3/4</sup> oz/sq yd ±5% (17<sup>3/4</sup> oz/lin.y ±5%)

#### Resistencia a la abrasión\*

D4966 Martindale method, Heavy Duty Upholstery  
independientemente del certificado de ≥100,000 ciclos  
Con garantía de uso 10 años (más información disponible bajo consulta)

#### Inflamabilidad

California Technical Bulletin 117 - 2013  
NFPA 260 + UFAC - Class 1  
BS 7176 Low Hazard  
ASTM E84 Class 2 or B (Adhered)  
ASTM E84 Class 2 or B (Un-adhered)  
**Por favor especificar cuando se requiere en el pedido:**  
ASTM E84 Class 1 or A (Adhered) estando con tratamiento FR  
*Nota: El rendimiento de la inflamabilidad depende de los componentes usados. Nuestros certificados muestran qué substratos se han usado en nuestros tests. Para tests compuestos nuestros clientes deben asegurar si sus muebles cumplen la normativa al uso.*

#### Solidez a la Luz

AATCC-16 (40 horas) Class 4

#### Solidez al Rozamiento

AATCC-8 (Seco: 4, Húmedo:3)

#### Limpieza

W/S  
Lavar con un producto de limpieza neutro o solvente:  
en función de la suciedad o mancha, se puede limpiar con un producto de limpieza en seco, espuma templada o producto de limpieza de sofás.

\*Camira reconoce que el número de Martindale ciclos no refleja el rendimiento real del desgaste de los tejidos. Estamos tan seguros de la durabilidad de nuestros tejidos que ofrecemos una garantía íntegra de 10 años (los detalles completos están disponibles). Esta gama está certificada externamente, todos los detalles están disponibles en nuestra web y en el departamento de atención al cliente.

Muchos factores afectan la durabilidad y el aspecto del tejido, incluyendo el usuario final y el mantenimiento adecuado. Por encima de 100.000 ciclos de Martindale, no se ha demostrado que indique una mayor durabilidad de los tejidos.

Se reserva el derecho de modificar las especificaciones técnicas sin previo aviso. Los derechos sobre dibujos no registrados y los derechos de autor sobre todos los dibujos son propiedad exclusiva de Camira Group Inc.

Witteveen Projectinrichting, Ouderkerk a/d Amstel  
Tel: 020 - 496 5030 info@witteveen.nl  
www.scheidingswand.net www.project-inrichting.nl

