

Project
Inrichting



FAME™

by Gabriel

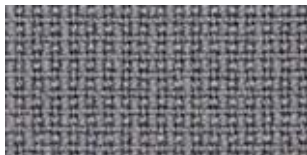
S = Varier Fame standaard kleur



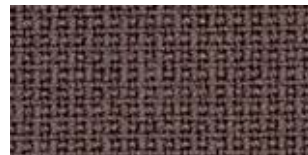
60005



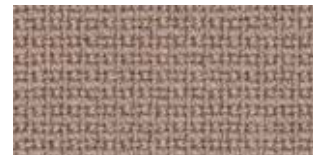
61136



60078



61135



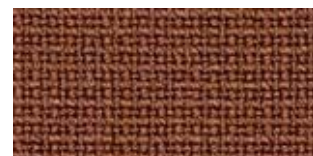
S 61003



60003



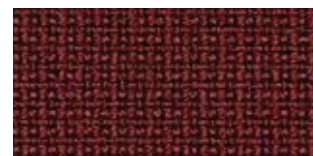
61060



61131



61133



63076



60017



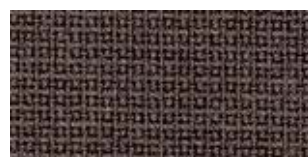
S 60019



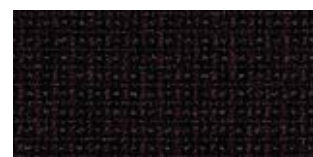
61047



S 60999



60051



61044



63077



64169



S 63016



64165



63078



64166



65081



64168



64119



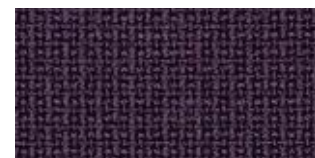
65082



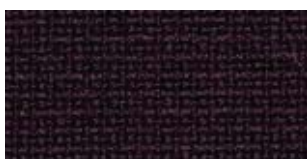
64167



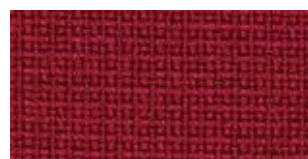
S 64089



S 64055



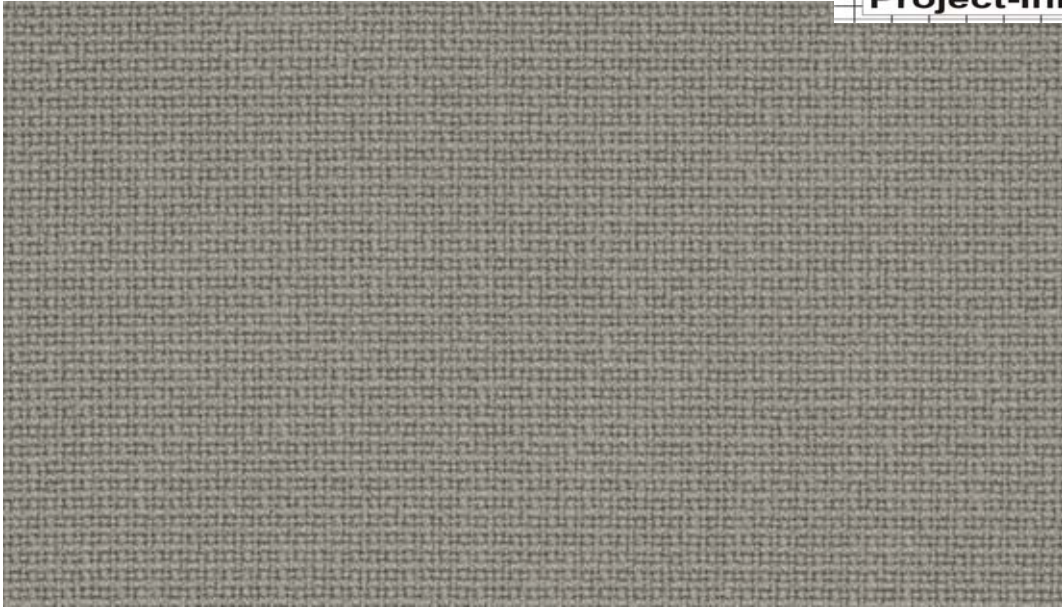
61108



64058



66132



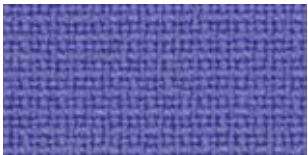
61136



66130



67068



65083



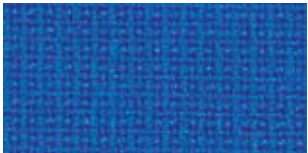
66118



66133



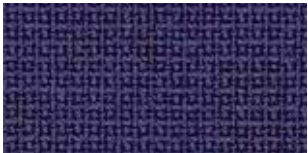
65084



66131



67016



66005



66075



67004



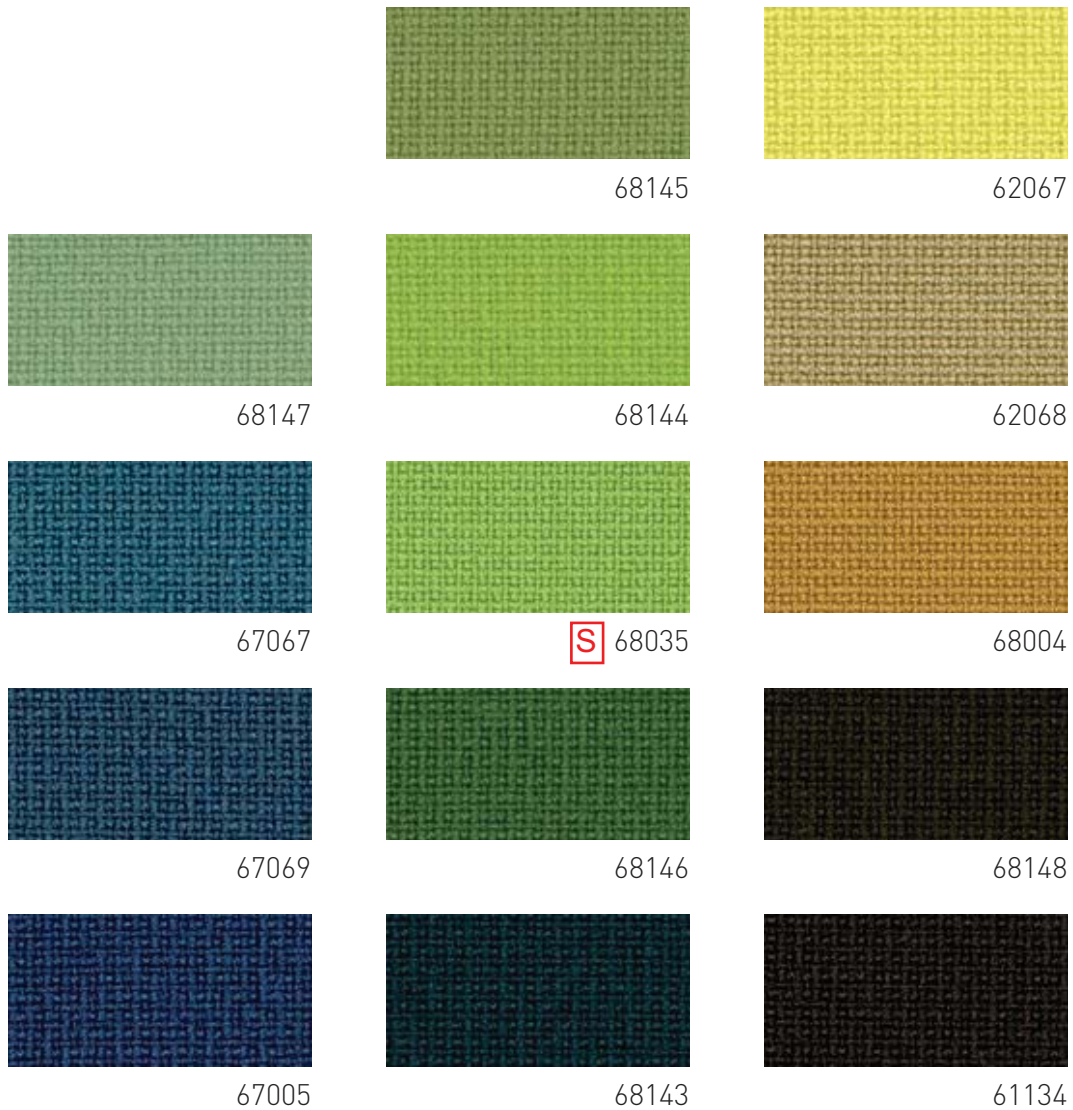
66061



66032



S 66071



FAME™

Design no.	2409	
Fields of application	contract furnishing	
Material	wool · polyamide	95 % · 5 %
Weight	630 gr/lm · (1.39 lbs/ly)	
Width	140 cm · (55")	
Abrasion resistance	rubs - EN ISO 12947-2 (Martindale)	200,000
Pilling	EN ISO 12945-2	4
Colour fastness to light	scale 1-8, max. 8 · EN ISO 105 - B02	5-7
Colour fastness to rubbing	scale 1-5, max. 5 · EN ISO 105x12 (wet/dry)	4-5
Cleaning	dry cleaning	P(S)
Flammability:	EN 1021 P1&2 · BS 5852, Crib 5 · BS 5852 0&1 · Calif. Bull. 117-E Class 1 · UNI 9175 Class 1 IM · AM 18 - NF D 60-013 · IMO Resolution MSC 307 (88); Annex 1, Part 8 · MED registration IMO. Will also pass other flammability standards. Flame retardant performance is dependent upon the foam used and fireproof treatment.	
	☼ AATCC 16 Lightfastness	pass
	☪ AATCC 8 or 116 wet/dry crocking	pass
	🔥 California Bulletin CAL 117-E Class 1	pass
	☐ ASTM D4966-02 Martindale Abrasion	pass
	☆ ASTM D3511 Pilling	pass
Design/Colours	Inger Mosholt Nielsen/Cenk Kivrikoglu	

Subject to changes and colour differences



Witteveen Projectinrichting
 Ouderkerk a/d Amstel
 Tel: 020 - 496 5030
 info@witteveen.nl
 www.project-inrichting.nl



QUALITY SYSTEM AND ENVIRONMENTAL MANAGEMENT SYSTEM
 DS/EN ISO 9001
 DS/EN ISO 14001

