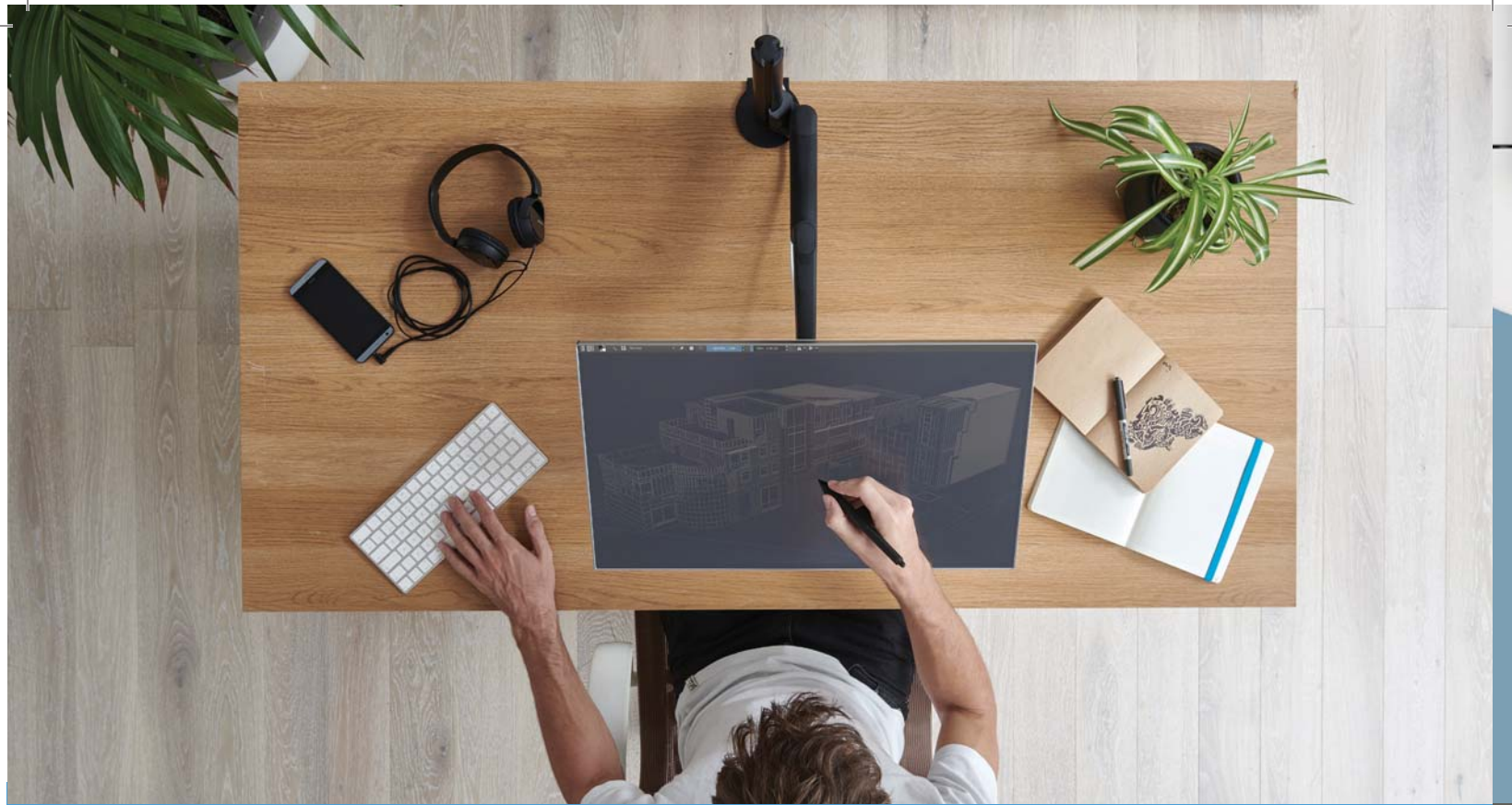


Welcome to Lima.

lima





Easy to install and adjust as either a single or dual screen solution, Lima continues our legacy of human-focused design.

With a history of industry firsts and award-winning products, we're proud to add an outstanding entry level monitor arm to our portfolio. Lima comprises a clamp, post and arm that arrive in one box, and require minimal tools to install. Ordering is simple and because the complete solution arrives as one, the dispatch process is far more efficient, and less packaging is used. Good for you, and good for the environment.

AN ADDED ADVANTAGE

As your workplace needs grow, Lima can too. Adding another monitor is quick and easy to do. Just order another extension arm, and then you can slide it directly on to the post. No tools, and no need to remove the existing arm, screen and cables. And that means no hassle for you.

THE HEIGHT OF SOPHISTICATION

With the press of a button, Lima allows you to move a screen up or down to the ideal height. And if you're working with dual screens, you can move each one independently. Being able to tailor each

screen height and distance to your unique needs helps you adopt a good posture and allows for healthy interaction between you and your technology.

Lima's head offers the ability to tilt the screen up to 80° back or 10° forward. This helps you set the screen to your unique specifications, taking in to consideration lighting in your workspace and the increased use of touchscreen devices in the modern workspace.

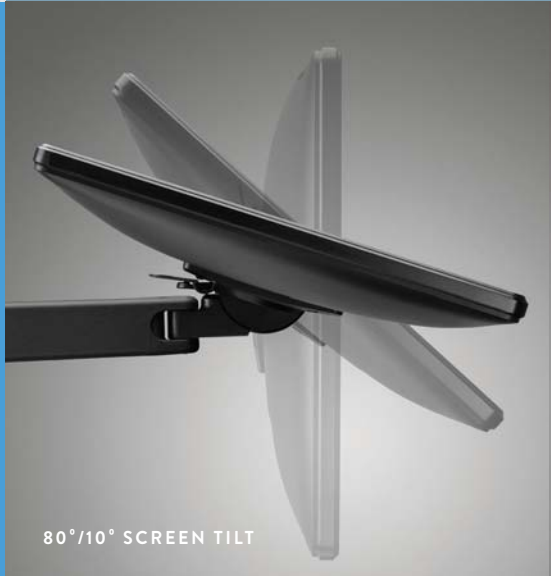
INSTALL WITH EASE

Lima is fast and easy to install. The post and clamp come in one piece, which attaches to the desk using a thumbwheel screw, and the arm then slides into the grooves on the post. And all you need to attach your screen to the VESA mount is a screwdriver.

Lima offers you a choice of colours to match the aesthetics of your workspace. Available in three colours; white, black and grey, with the posts available in anodized black and grey, Lima offers a concise choice of neutral colours to help it blend into any environment.



INDEPENDENT SCREEN ADJUST AND SIMPLE INSTALLATION



80°/10° SCREEN TILT



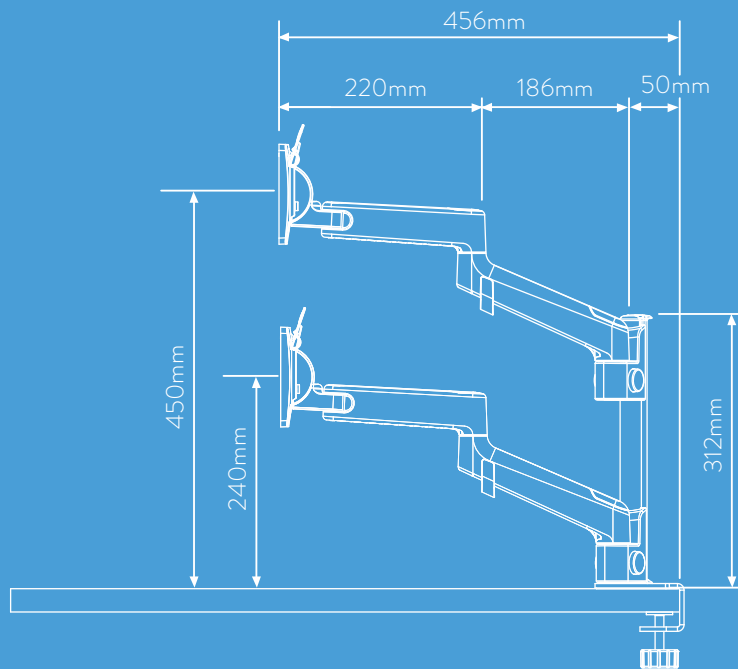
PORTRAIT TO LANDSCAPE



MODULAR CABLE MANAGEMENT SYSTEM

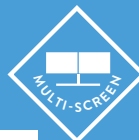


EFFORTLESS UPGRADE TO DUAL SCREEN



OVERVIEW

- Maximum monitor weight: 6.5kg
- Horizontal reach: 456mm (18")
- Monitor head: VESA 75 and 100 compliant
- 80°/10° screen tilt
- All-in-one box solution
- Desk clamp range 6mm to 40mm
- Available in white, grey and black



Witteveen Projectinrichting
 Ouderkerk a/d Amstel
 Tel: 020 - 496 5030
 info@witteveen.nl
 www.ergonomics.nl
 www.project-inrichting.nl

info@cbsproducts.co.uk
 +44 (0)207 940 4266
 www.colebrookbossonsaunders.com

