



Ollin Dynamic Monitor Arm – Product Details

1- Product Overview

Ollin means “movement” in Aztec language. The word perfectly suits the effortless dynamic movement of the new arm.

Ollin is the latest dynamic monitor arm introduction from CBS. It offers unprecedented ease of motion and a movement range that exceeds the already-impressive range of the award-winning Flo arm.

The arm can support monitor weights from 0kg to 9kg, a weight range unmatched in this product sector. This has been achieved by employing an innovative new support mechanism featuring an elastomeric ‘technical cord’ in place of the usual steel spring. This ‘down-to-zero’ weight range makes Ollin the perfect choice for mounting not only traditional monitors, but also the newer generation of slim, lightweight monitors, tablets and laptops.

The arm will be offered with a range of interchangeable front-end accessories to tailor the function of the product. These include a dual monitor mount bar, a tablet mount and a laptop mount.

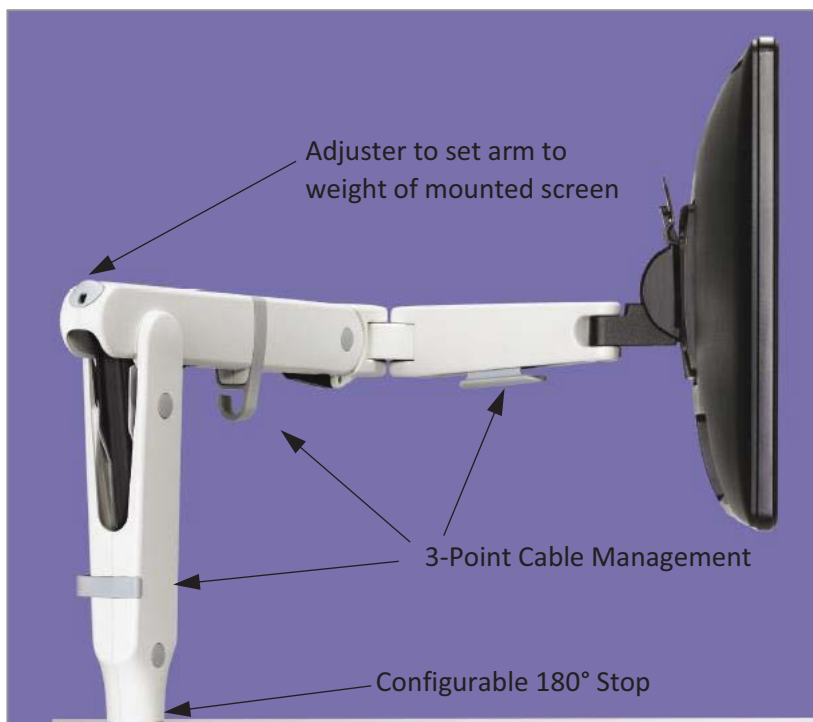




2 - Function and Features

The new Ollin monitor arm offers a host of novel features:

- Articulation range and smoothness of motion is best in class.
- Supports 0kg to 9kg load range. No other dynamic monitor arm offers this weight range. This makes Ollin ideal for mounting lighter technology, e.g. slim & lightweight monitors, tablets, laptops, hybrids, etc.
- Powered by innovative 'Technical Cord' system (rather than a steel spring or a gas strut.) This technology has made the extended weight range possible. The technical cord is also fully recyclable.
- Arm adjustment mechanism offers traditional allen key operation or easy 'tool-free' adjustment using the integral 'thumbwheel' adjuster.
- Indicator window displays weight setting to speed multiple installations (same as Flo.)
- Low-to-desk motion and generous rearward tilt is ideal for touchscreen input applications.
- Reconfigurable 180° in stop in clamps and desk mounts (to prevent clash with rear furniture panels.)
- 3 point cable management guides cables tidily from monitor to desktop.
- Material selection and 'design-for-disassembly' make Ollin 100% recyclable at the end of its operational life.
- A range of interchangeable front-end accessories will be available to tailor the function of the arm, including: Dual Screen Bar, Tablet Mount and Laptop Mount.



Indicator window displays load setting



Tool operated or manual 'thumbwheel' adjuster

Optional clip-on cover disables manual adjuster if required





3 - Fit / compatibility with CBS Product Range.

Ollin can fit to all existing Flo furniture mounts, however the overhang at the rear of the arm means that some mounts are not recommended for use with Ollin. Mounting recommendations are given below.

Following **are** recommended mounting options for Ollin:

- | | | |
|---|-------------------|------------------------------------|
| ✓ | MM-DYN/013/AS09 | Flo Split Clamp |
| ✓ | MM-DYN/013/C27 | Flo Top Mount Clamp (new version.) |
| ✓ | MM-DYN/013/AS11 | Flo Through Desk Fixing Kit |
| ✓ | MM-DYN/013/CSG100 | Flo Grommet Mount |

Following **are not** recommended mounting options for Ollin:

- | | | |
|---|-----------------|--------------------------|
| ✗ | MM-DYN/013/C25 | Flo Top Mount Clamp |
| ✗ | MM-DYN/013/C38 | Flo Dual Split Clamp |
| ✗ | MM-DYN/013/AS18 | Flo Dual Top Mount Clamp |

(**Note*** Due to the extended overhang at the rear of the Ollin arm, use of the above clamps could result in clash with mounted furniture panels or (in the case of dual clamps) clash with the adjacent monitor arm.)

Ollin is compatible with all versions of the Flo Power Hub (MM-USB/xxx/xxx/x).

Ollin is compatible with all versions of the Laptop Mount accessory (MM-LAP/001 and MM-LAP/010) which will mount to the Ollin VESA plate in the usual way.

4 - Ordering information:

Product code: MM-OLN/009/010/W (white colour)
MM-OLN/009/010/S (silver colour)
MM-OLN/009/010/B (black colour)

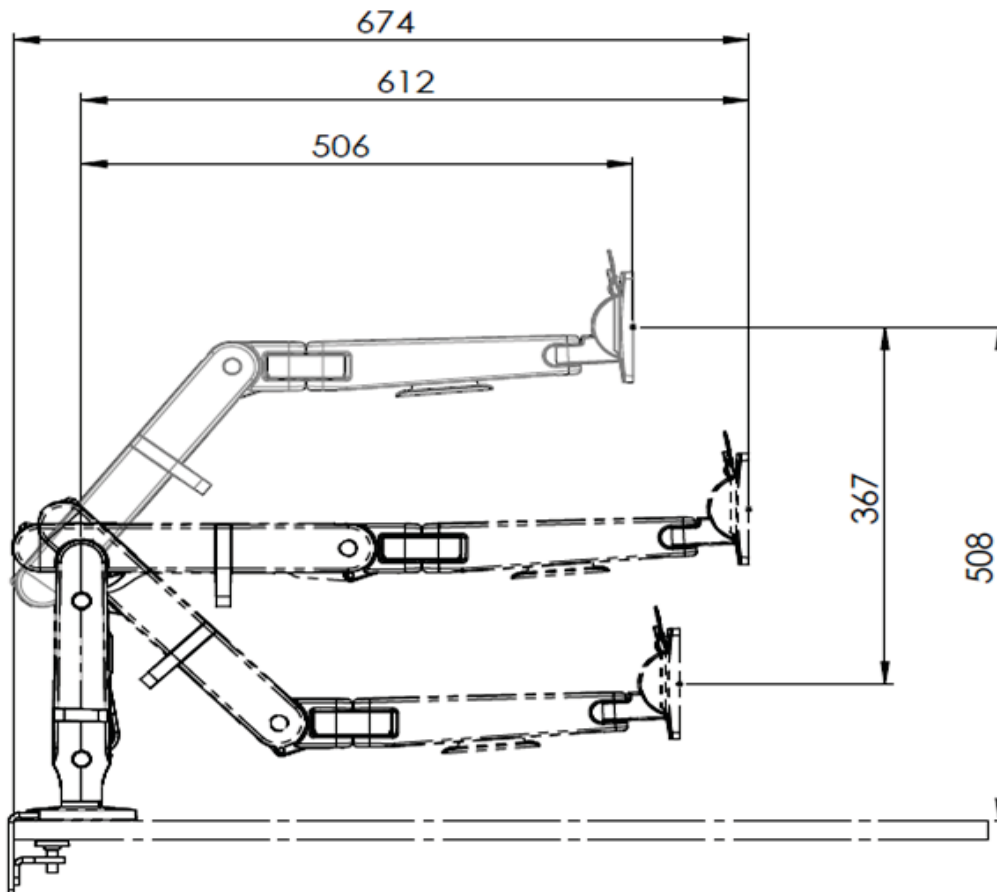
List price:

UK	GB£ 154
Europe	€ 209
World	US\$ 253
Australia	AUS\$ 279



5 - Product Specification

Monitor weight range:	0 – 9 kg	(Flo: 3 - 9kg)
Horizontal reach:	674mm	(Flo: 581.5mm)
Max height:	508mm	(Flo: 462.5mm)
Vertical range:	367mm	(Flo: 341mm)
Monitor tilt range:	+80° / -10°	(Flo: +/-48°)
VESA compliance:	VESA100 & VESA75	
Net product weight:	2.4kg	
Colour:	White, Silver, Black.	
Warranty:	Limited lifetime	
Country of manufacture:	China	



Configuration shows Ollin mounted to a Split Clamp.

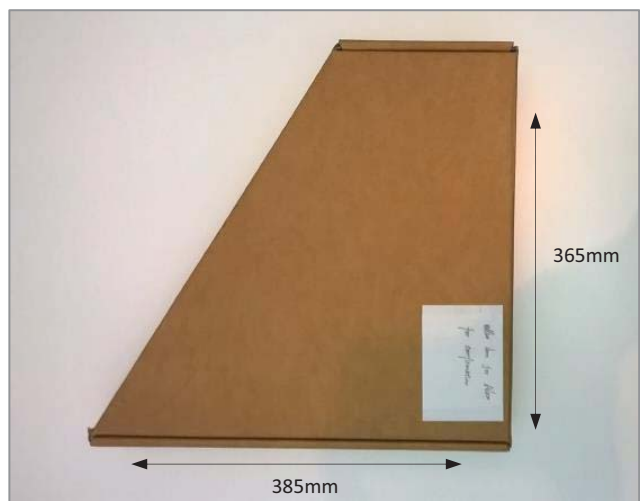
(Note* all dimensions are in mm)



6 - Logistical Data:

Pack contains:	Ollin arm, VESA mount plate & VESA fixing screws, optional security screw, cable management clip, optional adjuster cover, 4mm allen key.
Net product weight:	2.4kg
Product box gross weight:	3kg
Product box dimensions:	385mm x 365mm x 100mm*
Carton quantity:	6 pcs*
Carton gross weight:	19kg*
Carton dimensions:	555mm x 375mm x 310mm*
Pallet quantity:	72pcs (12 cartons)*
Pallet weight:	247kg*

Note*: Some logistical data is estimated and subject to future confirmation.



Product is packaged in a folded format to optimise package size, resulting in a non-rectangular box format.

Note that box dimensions given above are maximum sizes.



7 - Product Test Data:

During its development Ollin has been subjected to the following in-house durability tests:

Vertical movement:	13,000 complete cycles of movement.
Horizontal articulation:	13,000 complete cycles of movement.
Tilt action:	3,000 complete cycles of movement.

All tests were performed with the maximum mounted load of 9kg.



Witteveen Projectinrichting
Ouderkerk a/d Amstel
Tel: 020 - 496 5030
info@witteveen.nl
www.ergonomics.nl
www.project-inrichting.nl