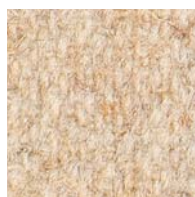


# Fenice **Wolvilt**



505



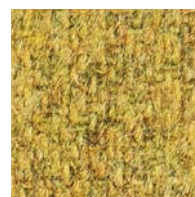
51



201



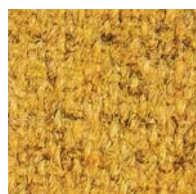
455



451



502



52



211



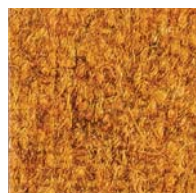
454



452



503



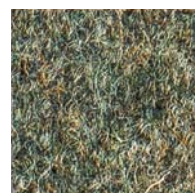
102



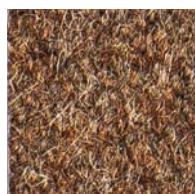
202



351



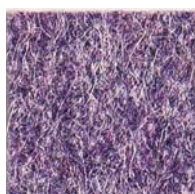
453



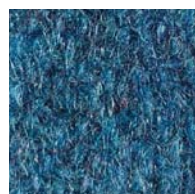
504



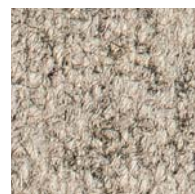
101



251



358



601



551



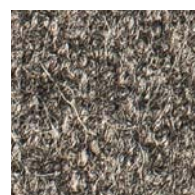
57



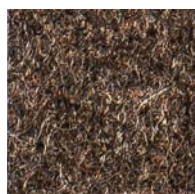
252



301



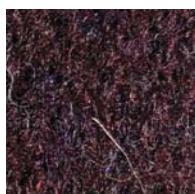
602



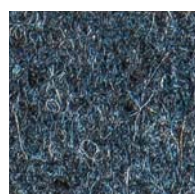
553



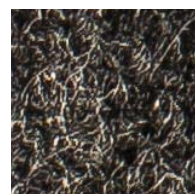
103



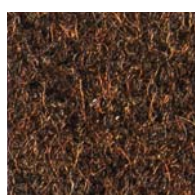
256



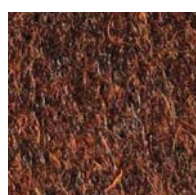
303



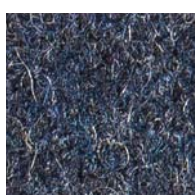
603



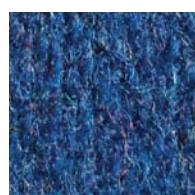
552



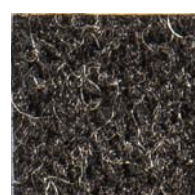
563



302

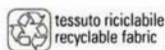


313



651

# Fenice



tessuto riciclabile  
recyclable fabric



colori speciali  
special colours

<b>Composizione</b>	75% Lana - 25% Poliammide
<b>Peso</b>	gr/mtl 500 ± 7%
<b>Altezza</b>	cm 150 ± 5%
<b>Lunghezza pezza</b>	mt 45 ± 5%
<b>Abrasione</b>	(Martindale) UNI EN ISO 12947:2000 100.000 cicli ± 20%
<b>Solidità alla luce</b>	(Xenotest) UNI EN ISO 105 B02 6 ± 1
<b>Certificati di Resistenza al fuoco</b>	Italia - Classe 1 IM con schiuma standard ignifuga con densità 25 kg/cu.m EN 1021 Part.1-2 using a standard foam 20/22 kg/cu.m USA Calif. Bull. 117 June 2013
<b>Manutenzione</b>	Usare con regolarità l'aspirapolvere a beccuccio liscio, senza spazzolare. 
<b>Differenze di colore</b>	Leggere differenze di colore fra una partita e l'altra sono da considerarsi normali.

<b>Composition</b>	75% Wool - 25% Polyamide
<b>Weight</b>	gr/lm 500 ± 7%
<b>Width</b>	cm 150 ± 5%
<b>Piece Length</b>	lm 45 ± 5%
<b>Abrasion Test</b>	(Martindale) UNI EN ISO 12947:2000 100.000 turns ± 20%
<b>Lightfastness</b>	(Xenotest) UNI EN ISO 105 B02 6 ± 1
<b>Flammability Certificates</b>	Italy - Class 1 IM using a standard FR polyurethane foam 25 kg/cu.m density EN 1021 Part.1-2 using a standard foam 20/22 kg/cu.m USA Calif. Bull. 117 June 2013
<b>Maintenance</b>	- Use the vacuum-cleaner with smooth spout regularly, don't brush. 
<b>Colour Matching</b>	Slight differences between dyeing lots are considered normal.

Project-Inrichting.nl

Witteveen Projectinrichting  
Ouderkerk a/d Amstel  
Tel: 020 - 496 5030  
info@witteveen.nl  
www.ergo-burostoel.nl  
www.project-inrichting.nl