

462

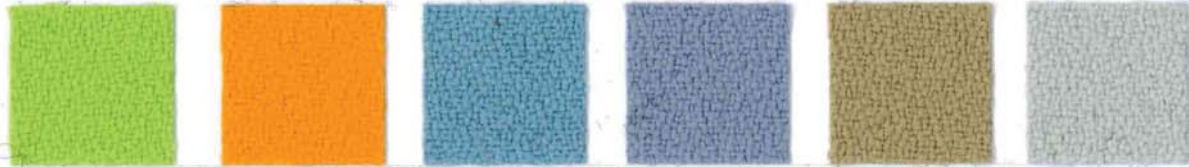
53

366

367

532

999



463

66

386

377

519

643



425

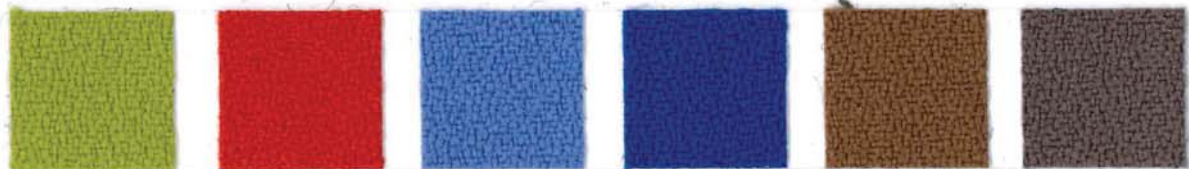
133

379

378

533

629



464

120

380

331

534

625



426

180

263

332

119

636



443

231

175

334

572

607



496

236

234

333

569

573



411

173

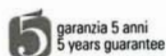
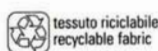
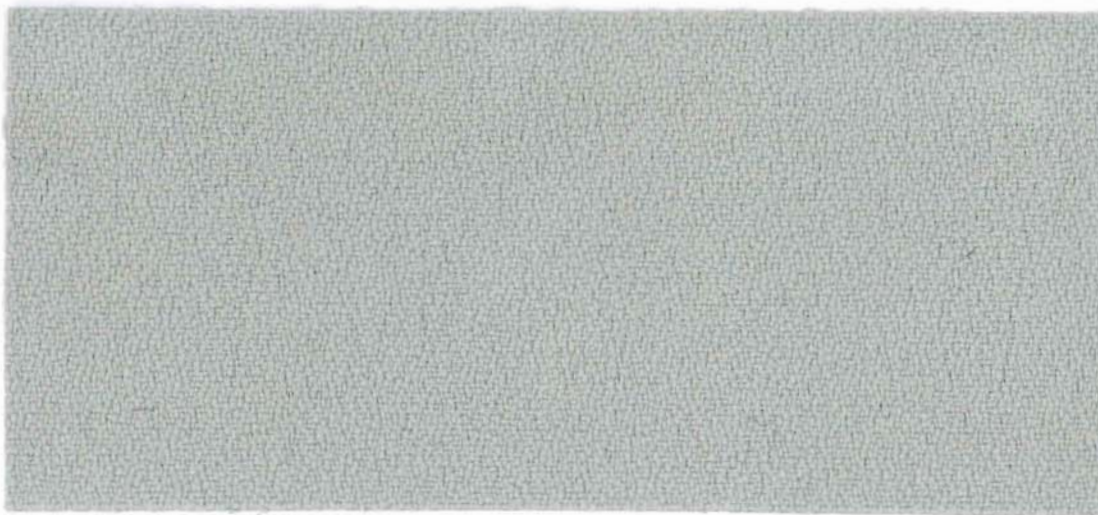
262

343

571

651

# Mirage



<b>Composizione</b>	100% Poliestere FR (Tr Cs)	
<b>Peso</b>	gr/mtl 460 ± 10%	
<b>Altezza</b>	cm 140 ± 2%	
<b>Lunghezza pezza</b>	mt 55 ± 5%	
<b>Abrasiono</b>	(Martindale) UNI EN ISO 12947:2000 100.000 cicli ± 20%	
<b>Solidità alla luce</b>	(Xenotest) UNI EN ISO 105 B02	5/6 ± ½
<b>Certificati di</b>	Italia - Classe 1	
<b>Resistenza al fuoco</b>	Germania - B1 DIN 4102 Francia - M1 Francia - NF D 60-013:2006 AM18 Austria - B1 OENORM B3825 Austria - Q1 OENORM 3800 Part. 1 Svizzera - Fire Protection Classification: 5.3 BS 5852 Crib 5 using a CM Foam 35 kg/cu.m EN 1021 Part.1-2 using a CM Foam 35 kg/cu.m EN 13773 Burning Behaviour: Class 1 EN 13501-1 <sup>12</sup> : B-s1, d0 EN ISO 6940/6941 USA Calif. Bull. 117 June 2013 IMO 688 (17) - IMO 563 (14) IMO RES.MSC FTP Code 307 (88) /2001 Annex 1 Part 8 using a CM Foam 35 Kg/cu.m FAR.25853 Classification: yes	
<b>Manutenzione</b>	Usare con regolarità l'aspirapolvere a beccuccio liscio, senza spazzolare.	
<b>Differenze di colore</b>	Leggere differenze di colore fra una partita e l'altra sono da considerarsi normali.	

<b>Composition</b>	100% Polyester FR (Tr Cs)	
<b>Weight</b>	gr/lm 460 ± 10%	
<b>Width</b>	cm 140 ± 2%	
<b>Piece Length</b>	lm 55 ± 5%	
<b>Abrasion Test</b>	(Martindale) UNI EN ISO 12947:2000 100.000 turns ± 20%	
<b>Lightfastness</b>	(Xenotest) UNI EN ISO 105 B02	5/6 ± ½
<b>Flammability</b>	Italy - Class 1	
<b>Certificates</b>	Germany - B1 DIN 4102 France - M1 France - NF D 60-013:2006 AM18 Austria - B1 OENORM B3825 Austria - Q1 OENORM 3800 Part. 1 Switzerland - Fire Protection Classification: 5.3 BS 5852 Crib 5 using a CM Foam 35 kg/cu.m EN 1021 Part.1-2 using a CM Foam 35 kg/cu.m EN 13773 Burning Behaviour: Class 1 EN 13501-1 <sup>12</sup> : B-s1, d0 EN ISO 6940/6941 USA Calif. Bull. 117 June 2013 IMO 688 (17) - IMO 563 (14) IMO RES.MSC FTP Code 307 (88) /2001 Annex 1 Part 8 using a CM Foam 35 Kg/cu.m FAR.25853 Classification: yes	
<b>Maintenance</b>	Use the vacuum-cleaner with smooth spout regularly, don't brush.	
<b>Colour Matching</b>	Slight differences between dyeing lots are considered normal.	



Witteveen Projectinrichting  
Ouderkerk a/d Amstel  
Tel: 020 - 496 5030  
info@witteveen.nl  
www.vergadertafel.info  
www.project-inrichting.nl