

SIMPLY
GOOD LIGHT

LAVIGO.CORE



ENGINEERS OF LIGHT

FREE-STANDING AND DESK-MOUNTED LUMINAIRES





LAVIGO.CORE THE LIGHT OF GOOD WORKPLACES

Everything you need. For all those who want to really get going. With this free-standing luminaire from the LAVIGO family, we have focused on standard-compliant lighting quality for screen-compatible illumination of office workstations. With daylight and presence sensors built in as standard, LAVIGO.core offers pleasant comfort to all users and increases energy efficiency.

LAVIGO.core is simply the right choice when good light at the workplace is important. You can find further variants of the LAVIGO with additional features under www.waldmann.com/lavigo

The spirit of Waldmann's founder radiates from the EMIL 28 showroom, a space filled with inspirational lighting ideas. #blackforestlight

The light of precision,
so productivity improves.

The light of reason,
so everyone understands.

The light of creativity,
so better ideas emerge.

The light of knowledge,
so R&D delivers more findings.

The natural light of day,
so people stay healthy.

The light of sustainability,
so nothing goes to waste.

The light of connectivity, so everything
in the building works as a system.

The light of experience,
so mistakes don't occur.

The light of success,
so companies can grow.

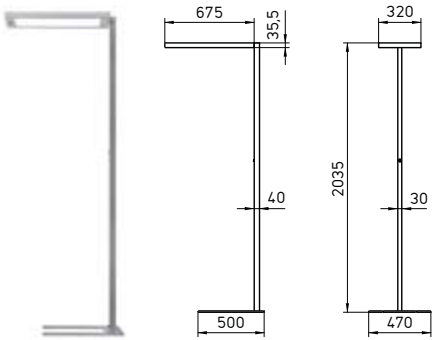
Shine the #blackforestlight and
defeat darkness everywhere.

SHINE A LIGHT

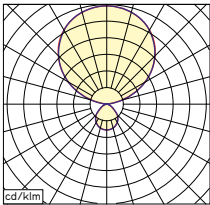
AS SHORT AND TECHNICAL AS POSSIBLE

Free-standing luminaires

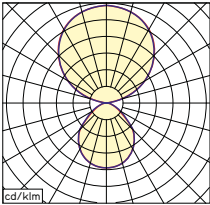
- Easily accessible control element (tumbler)
- Motion and daylight sensor PIR
- Follow-up time motion sensor 15 min
- Backlight technology
- Direct and indirect light can be switched together
- LED lifetime L80 50 000 h



LAVIGO.CORE	12 400 lm	8 900 lm
Luminous efficacy	approx. 146 lm/W	approx. 144 lm/W
Light distribution	approx. 17 %/83 %	approx. 35 %/65 %
Luminance	< 3000 cd/m²	< 4400 cd/m²
Ugr	< 13	< 16
Color rendering index	Ra > 80	
Glare-free	Conical prismatic screen	
Connected load	220 – 240 V; 50/60 Hz	
Protection class	IP 20	
weight (net)	approx. 14,7 kg	
Power supply	approx. 3 m cable with mains plug	
Free-standing luminaires		



12400 lm



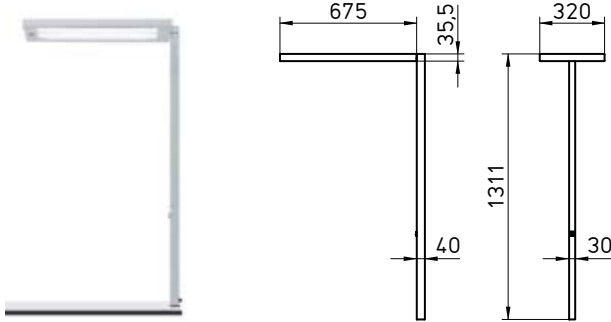
8900 lm

LAVIGO.CORE light colour neutral white 4000 K

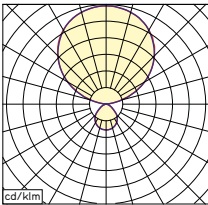
Fitted with	Technology	Model	Order No. white	Order No. silver	Order No. black
12400 lm	PIR sensor	12500/840/R/G1	121855000-00812431	121855000-00812432	121855000-00812433
8900 lm	PIR sensor	9000/840/R/G1	121856000-00812470	121856000-00812468	121856000-00812472

Desk-mounted luminaires

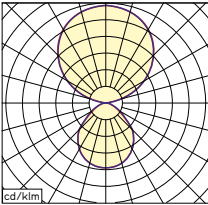
- Easily accessible control element (tumbler)
- Motion and daylight sensor PIR
- Follow-up time motion sensor 15 min
- Backlight technology
- Direct and indirect light can be switched together
- LED lifetime L80 50 000 h
- Mounting: Table adaption (accessories)



LAVIGO.CORE	12 400 lm	8 900 lm
Luminous efficacy	approx. 146 lm/W	approx. 144 lm/W
Light distribution	approx. 17 %/83 %	approx. 35 %/65 %
Luminance	< 3000 cd/m²	< 4400 cd/m²
Ugr	< 13	< 16
Color rendering index	Ra > 80	
Glare-free	Conical prismatic screen	
Connected load	220 – 240 V; 50/60 Hz	
Protection class	IP 20	
weight (net)	approx. 8,3 kg	
Power supply Tischaufbauleuchte	approx. 3,7 m cable with mains plug	



12400 lm



8900 lm

LAVIGO.CORE light colour neutral white 4000 K

Fitted with	Technology	Model	Order No. white	Order No. silver
12400 lm	PIR sensor	12500/840/R/G1	121857000-00812477	121857000-00812475
8900 lm	PIR sensor	9000/840/R/G1	121858000-00812481	121858000-00812479

LAVIGO.CORE Table Clamp

Range	Model	Order No. white	Order No. silver
12 - 13 mm	TK 1A/30	191118019-00802403	191118019-00802404

Witteveen Projectinrichting
Ouderkerk a/d Amstel
Tel: 020 - 496 5030
info@witteveen.nl
www.ergonomics.nl
www.project-inrichting.nl

Herbert Waldmann GmbH & Co. KG
Peter-Henlein-Straße 5
78056 Villingen-Schwenningen, Germany
Telephone +49 7720 601-0
Telephone +49 7720 601-100 (Sales)
Fax +49 7720 601-290
www.waldmann.com
sales.germany@waldmann.com

(1 of 1000)

Here, we like to train the spotlight on the people at Waldmann who give their all to create the best possible lighting solutions. Thank you, SOPHIA!

**ENGINEERS
OF LIGHT:
SOPHIA**