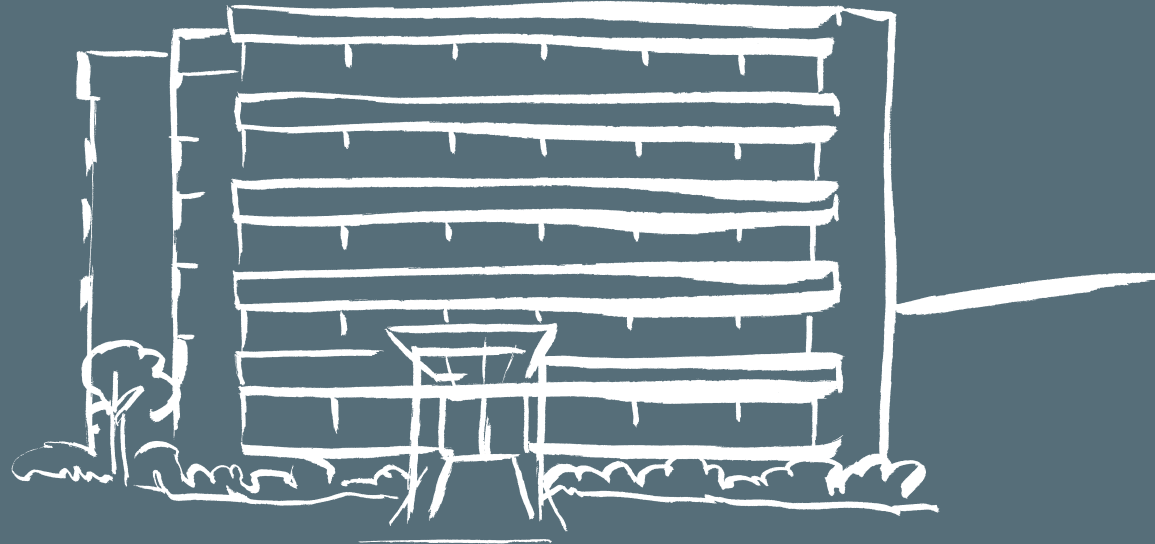




Lighting Expertise
Solutions by Waldmann



Waldmann **W**



Waldmann - a passion for light

Waldmann stands for high-quality lighting solutions that meet the needs of people, that take into consideration different room situations and that help to save energy. We develop and produce our luminaires and lighting systems in-house with an exceptional and vertically integrated manufacturing resource. We are able to do this because of more than six decades of a passion for light, combined with our extensive expertise in mechanical and electronic systems.

For a very long time now, we have been co-writing the history of lighting as an owner-managed company with our innovations in the business sectors of industry, office, health & care and medical phototherapy.

Waldmann **W**
ENGINEER OF LIGHT.

ENGINEERING POWER
FOR YOUR LIGHTING VISIONS.



Derungs **D**

Waldmann **W**
ELEKTROTECHNIK

Founded back in 1928 in Villingen-Schwenningen as an electrical installation business, Waldmann has developed into a technology leader in the lighting sector. Today, Waldmann employs a staff of almost 1000 at its head office location in Villingen-Schwenningen and in its sales and production locations in 12 nations. The Waldmann Group also includes Derungs, LIG and Waldmann Elektrotechnik.





Sustainability - thinking today of tomorrow

We attach great importance to sustainability. This commitment includes active certified environmental management. This is why we do our utmost to achieve high energy efficiency not only by using the latest LED technology in our luminaires, but also during production and we limit the use of harmful substances wherever possible. Recycling also plays a key role both during production and for our products.

We are thus one of the few luminaire manufacturers to offer cradle-to-cradle certification. You also benefit economically from our sustainability efforts: our energy-efficient luminaires reduce your costs, they have a long useful life and are low-maintenance.

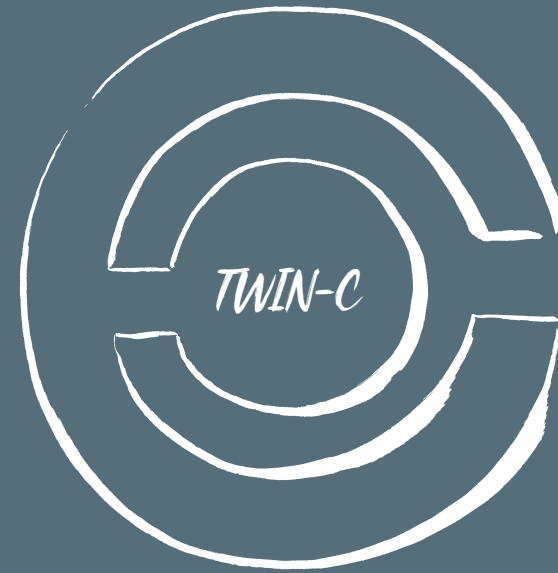
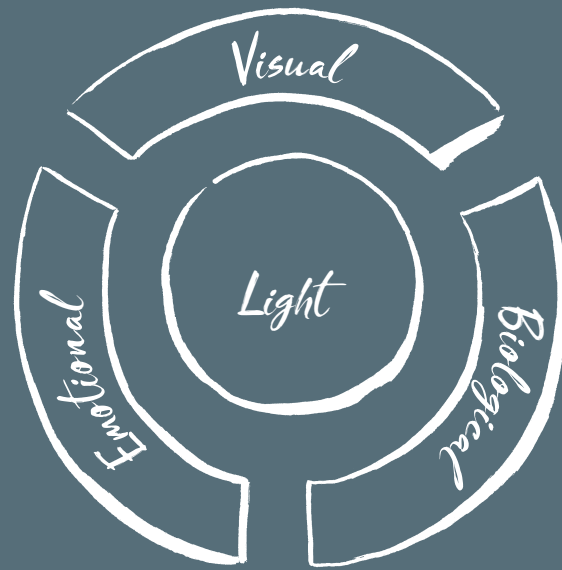


Sustainability at Waldmann

- Certified environmental management to DIN ISO 14001
- High product quality, long service life, low maintenance requirements
- Compliance with DGNB (German Sustainable Building Council) and Minergie requirements
- First cradle-to-cradle product certificates
- Lighting in line with demand



Cradle to Cradle® is a registered trademark of McDonough Braungart Design Chemistry, LLC (MBDC). Cradle to Cradle Certified™ is a certification mark licensed exclusively for the Cradle to Cradle Products Innovation Institute.



Waldmann lighting philosophy - meeting individual requirements

The right lighting has a positive effect on well-being and helps to keep people healthy. It boosts productivity and it helps to save energy. To implement all of these factors in a manner adapted to suit individual requirements perfectly, we work in accordance with our tried and tested TWIN-C lighting philosophy: the combination of a professionally conceived lighting concept (Concept) with the appropriate light components to implement that concept (Components).

In this process, we incorporate the visual and emotional effects of light alongside its biological impact. You see, light has a major influence on our biorhythm and on our sense of well-being. With more than 10 years of experience in the field of biodynamic lighting, we are able to offer you extensive consultancy support together with a comprehensive range of products to implement a biologically effective lighting concept.

Lighting philosophy

- TWIN-C: promotes cost-effectiveness, health and efficiency
- Individual lighting concept
- Ideally matched lighting components
- Professional light planning
- Taking due account of the visual, emotional and biological aspects of light



Lighting solutions - from one source



For the office

You will find that we have workplace-oriented as well as room-based lighting solutions to equip office premises and administration buildings. Seamlessly designed families of luminaires enable a harmonious overall impression to be created. Our lighting is easy to install and operate.

A combination of our light management systems and/or networking with buildings, users or combinations of several luminaires further enhances energy efficiency and convenience.



For industry

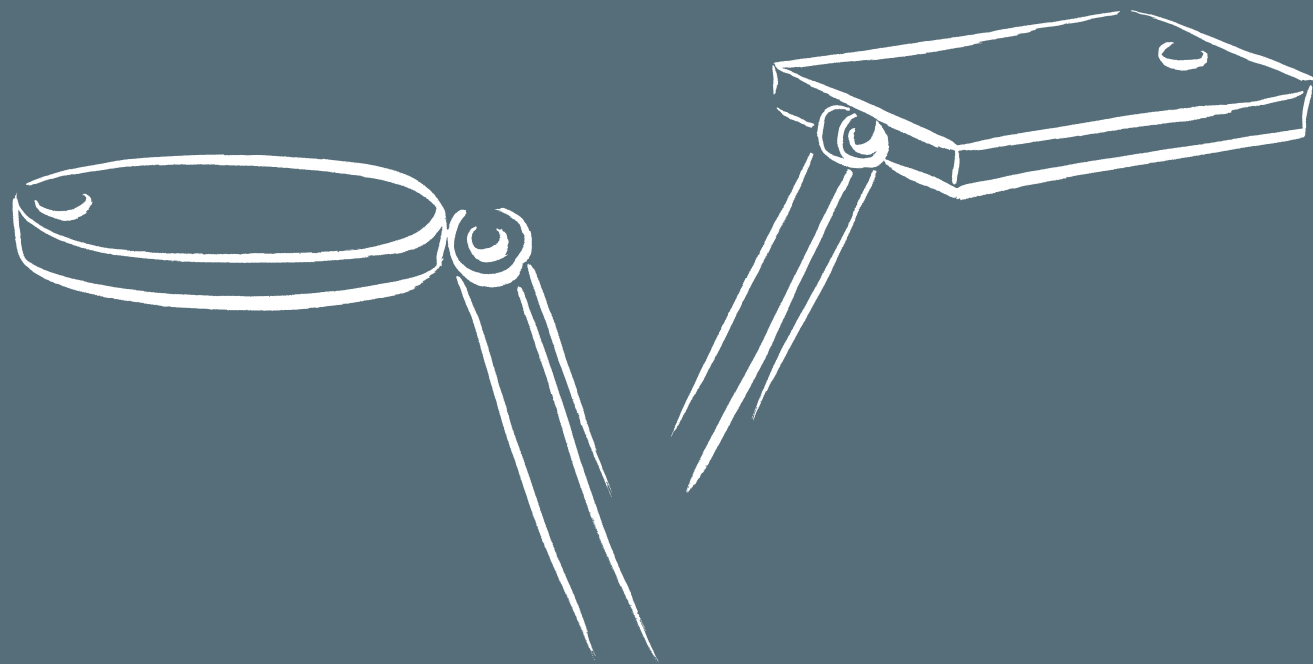
We can cover all of the lighting requirements of a modern industrial company. From the lighting of industrial buildings to individual workplaces and machines. An entire industrial company can be equipped with lighting that bears the Waldmann signature, always carefully matched to task and environment. These sophisticated individual lighting solutions support people at work and enable a sustainable and careful use of energy.



For health & care

Especially in the health & care business, light has a significant influence on our sense of well-being and on our health. In clinics and rehabilitation centres, light can assist in the healing process. In homes for senior citizens, good lighting can provide guidance and safety, while also making it easier at all times for personnel to do their work.

For a range of different needs, we offer modern lighting solutions and can support you, especially with our expertise in biodynamic lighting.



Timeless design - awarded lighting

With a language of shapes reduced to its bare essentials, we work closely with designers and architects to achieve maximum functionality with our luminaires, and to deliver optimum user convenience. The timeless design of our products, based on the principle of simplicity, has already garnered a host of design prizes and constitutes an important design element to implement atmosphere and a sense of well-being throughout your project.



reddot award
winner



Waldmann – a language of shapes

- Timelessness – the principle of simplicity
- Collaboration with designers and architects
- Superlative lighting in all areas
- Design element for atmosphere and a sense of well-being

Waldmann luminaires for office & administration



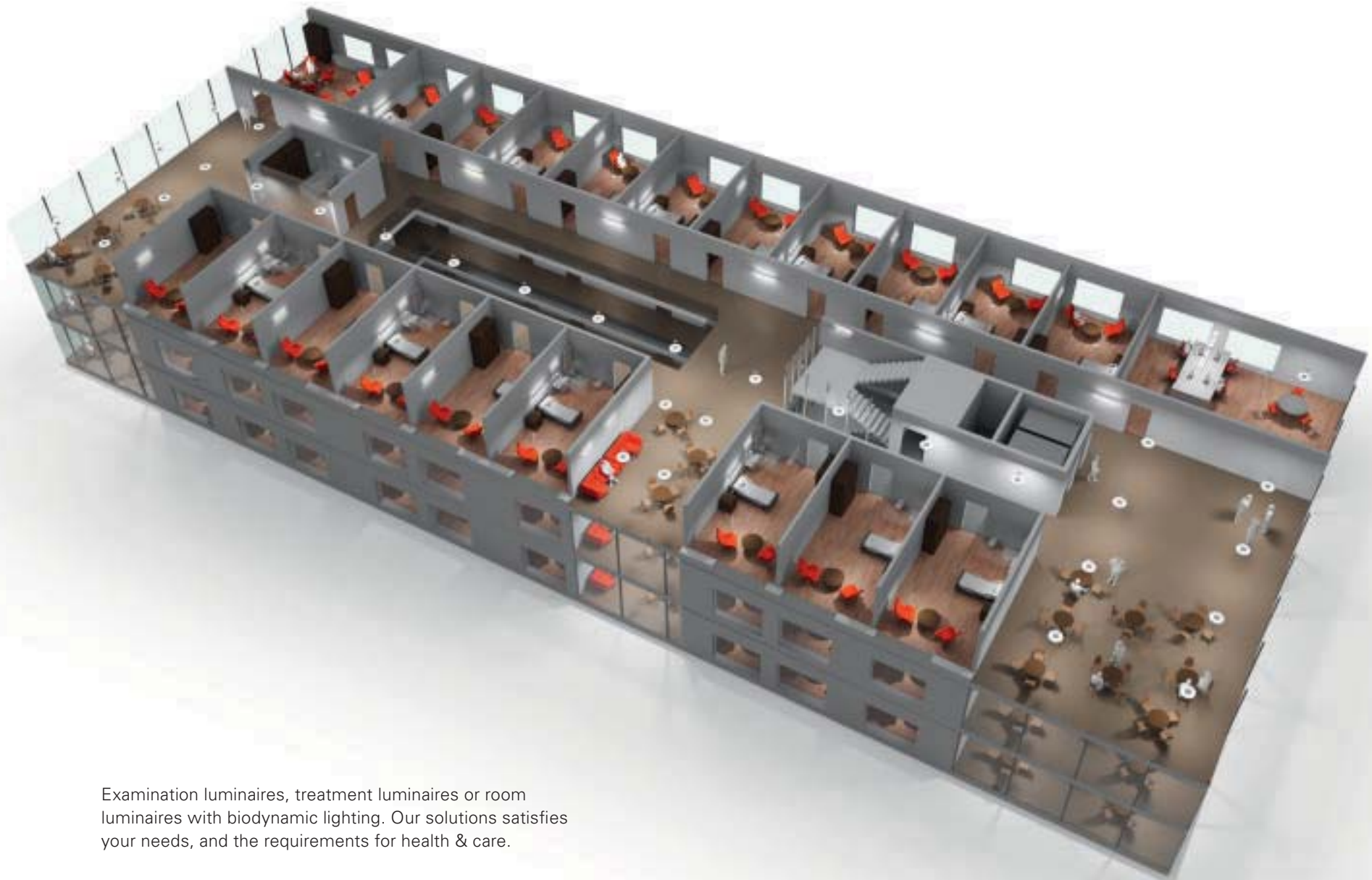
Room-oriented or workplace-based, intelligently networked or operated by a simple switch. With us, you will find the appropriate solution for your office needs.

Waldmann luminaires for industry



Industrial building lighting or luminaires for machines and plant. We have the appropriate lighting solution for your needs in industry.

Waldmann luminaires for health & care



Examination luminaires, treatment luminaires or room luminaires with biodynamic lighting. Our solutions satisfies your needs, and the requirements for health & care.



Light management - intelligent and digital lighting

Our lighting solutions are intelligent, as well as easy to install and operate. Our light management systems promote comfort, a sense of well-being, health and energy savings. In addition, we can provide solutions such as daylight and presence sensor systems, swarm control or biodynamic light. If required, integration in a central building management system is easy to implement. The intelligence of our luminaires can also be used to control other items of equipment, or for the surveillance of premises and room usage behaviour. A multiplicity of lighting solutions also enables the user to operate individual control options, even with a centrally controlled system.

Intelligence by Waldmann

- Intelligent light management systems
- Connected Lighting
- Easy to install and operate
- Easy to integrate in building management systems
- Use of lighting intelligence for other items of equipment, or for room information

Our references in the office & administration sector



1 University hospital Freiburg

2 feco Systeme GmbH, Karlsruhe

3 LEMKEN GmbH & Co. KG, Alpen

4 MANN+HUMMEL GmbH, Ludwigsburg

5 ZF Friedrichshafen AG

6 SWAN, Dortmund

7 A. Würth GmbH & Co. KG, Künzelsau-Gaisbach



Our references in the industry sector



1

1 Lécureux AG, Biel, Switzerland



2

2 Richard Wolf GmbH, Knittlingen



3

3 medwork GmbH, Höchststadt / Aisch

4 KOBIT, spol. s r.o., Jičín, Czech Republic

5 Theben AG, Haigerloch

6 Walter AG, Tübingen

7 HAAS Schleifmaschinen GmbH, Trossingen



4



7



6



5

Our references in the health & care sector



1 Therapeutic care centres in Altentreptow and Neubrandenburg

2 Retirement and Nursing Centre Rupprechtstegen GmbH, Rupprechtstegen

3 Haus St. Antonius in Paderborn

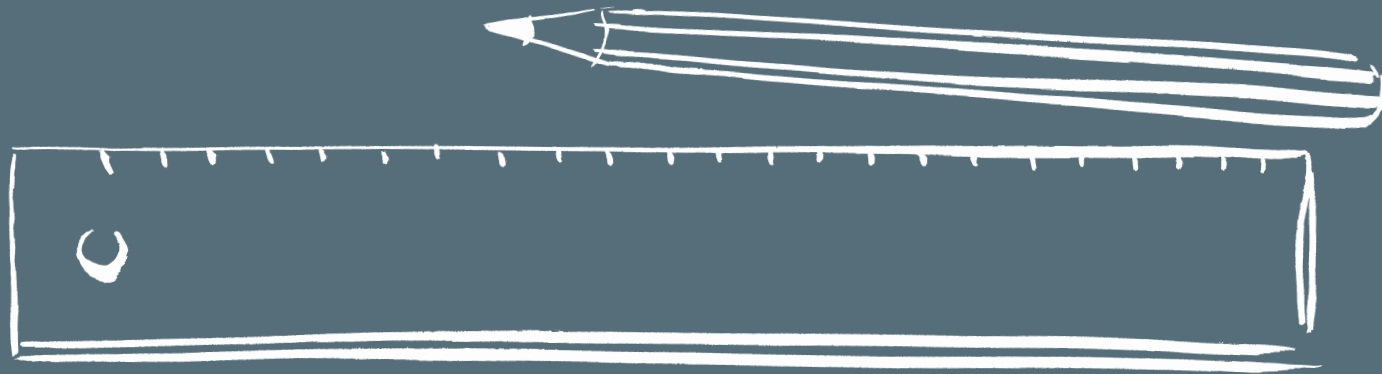
4 Retirement Residence Isar-Loisach, Wolfratshausen

5 Integra Retirement Care Centre, Winsen-Luhe

6 St. Marien-Hospital, Cologne

7 Integra Retirement Care Centre, Winsen-Luhe





We assist you - at every stage

We would be pleased to assist you. Right from the draft design stage, our lighting experts are always pleased to advise you in person during each stage of your project. Helpful tools such as an online lighting calculator, comprehensive product data and exemplary lighting calculations are available to you at all times on our website. We are also there for you to offer professional lighting planning, financing options or service and maintenance schemes.

Waldmann tools, assisting you

- Personal consulting at every stage of your project
- Access to many planning tools
- Extensive data available online
- Non-binding samples can be provided
- Professional light planning
- Cleaning and maintenance service
- Financing options

To ensure that no questions remain unanswered - first-hand information

Waldmann is pleased to assist you with all questions relating to the planning, installation and maintenance of its products. Your Waldmann lighting consultant is looking forward to your call.

You will find detailed information about all Waldmann products in our standard catalogues. Simply request a free copy or download one from www.waldmann.com



HEADQUARTERS GERMANY

Herbert Waldmann GmbH & Co. KG
Peter-Henlein-Straße 5
78056 VILLINGEN-SCHWENNINGEN
GERMANY
Telephone +49 7720 601 - 0
Telephone +49 7720 601 - 100 (Sales)
Fax +49 7720 601 - 290
www.waldmann.com
sales.germany@waldmann.com



Witteveen Projectinrichting
Ouderkerk a/d Amstel
Tel: 020 - 496 5030
info@witteveen.nl
www.ergonomics.nl
www.project-inrichting.nl

www.waldmann.com