



**TREVIRA**

Composition : 100% POLYESTER TREVIRA CS  
 Weight : 340 g/m<sup>2</sup>  
 Light fastness : Scale 6 (blue scale) Xenotest  
 Abrasion resistance: 100.000 (rubs) Martindale  
 Cleaning Washing:

Fire resistance :

C1	CRIB5	BS 7176/MH	M1	NFD 60013 (AM 18)	B1	EN 1021/1-2	IMO A 652 (16)
----	-------	------------	----	-------------------	----	-------------	----------------

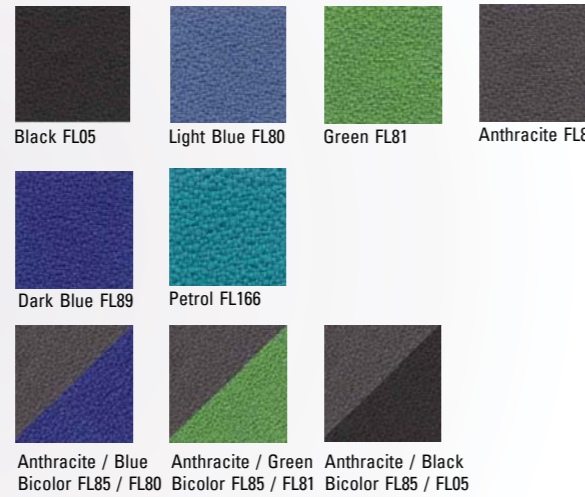


**FLEX**

Composition : 100% POLYESTER TREVIRA CS  
 Weight : 300 g/m<sup>2</sup>  
 Light fastness : Scale 6 (blue scale) Xenotest  
 Abrasion resistance: 100.000 (rubs) Martindale  
 Cleaning Washing:

Fire resistance :

C1	CRIB5	BS 7176/MH	M1	NFD 60013 (AM 18)	B1	EN 1021/1-2	IMO A 652 (16)
----	-------	------------	----	-------------------	----	-------------	----------------

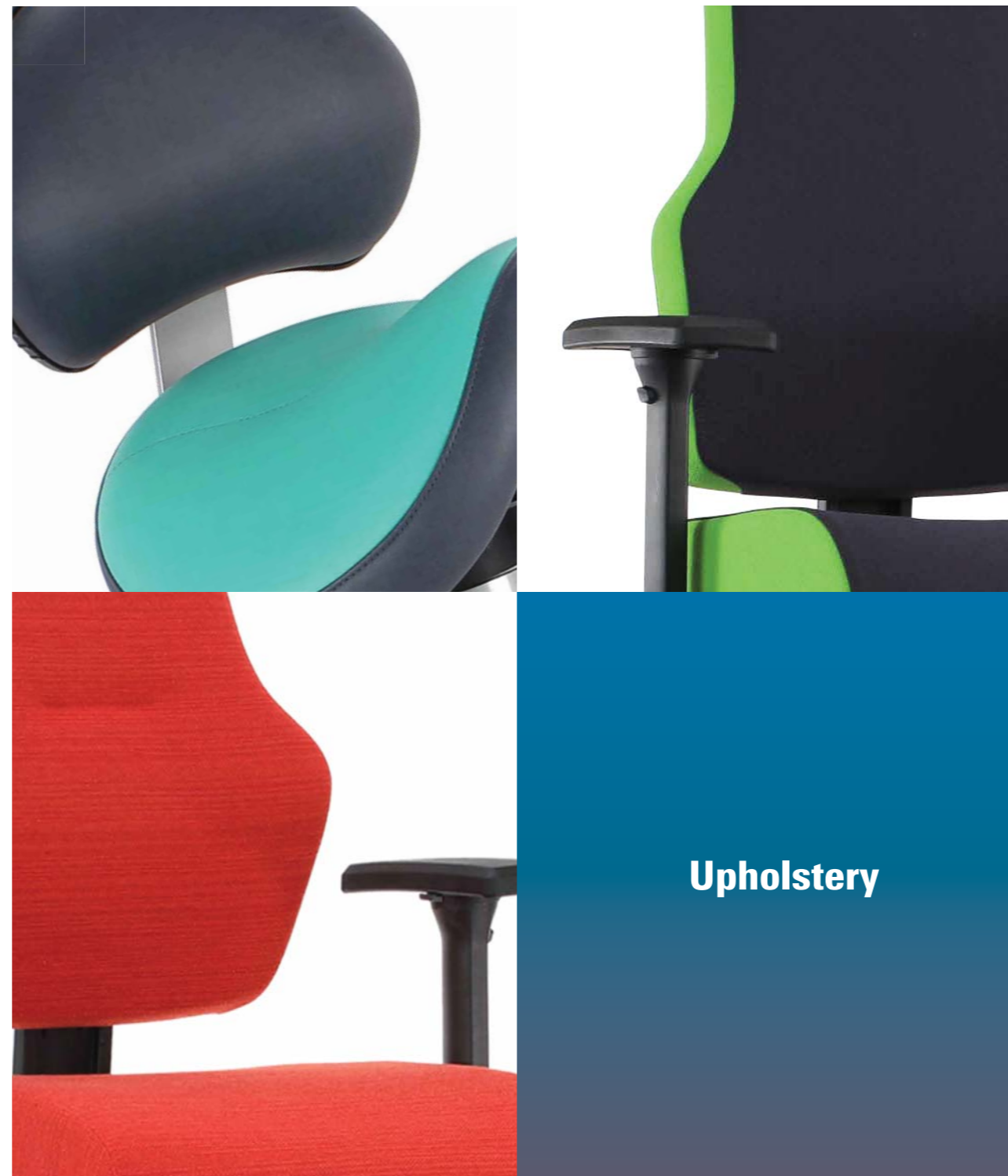
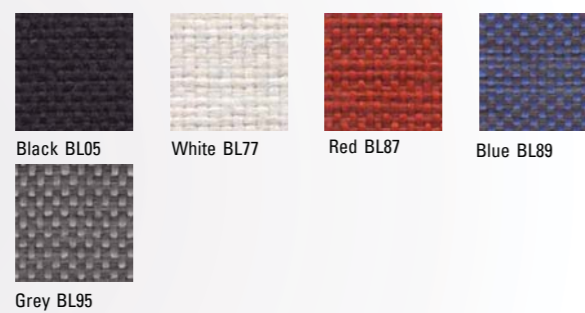


**TREVIRA BLEND**

Composition : 100% POLYESTER TREVIRA CS  
 Weight : 420 g/m<sup>2</sup>  
 Light fastness : Scale 6 (blue scale xenotest)  
 Abrasion resistance: 100.000 (rubs) Martindale  
 Cleaning Washing:

Fire resistance :

C1	CRIB5	M1	B1	EN 1021/1-2	BS 7176/MH	NFD 60013 (AM 18)	IMO A 652 (16)
----	-------	----	----	-------------	------------	-------------------	----------------



**STAMSKIN**

Composition : Stamskin TOP F 4340, backing Polyamide-jersey, coating anti-microbial- and anti-fungal treatment  
 Weight : 780 g/m<sup>2</sup>  
 Light fastness : Scale 7  
 Abrasion resistance: >120.000 rubs Martindale  
 Advantages : Urine-, blood-, sweat-, fungal and waterproof, manufactured to environmentally friendly standards ISO 14001  
 Cleaning : With brush, water and soap, rinse of with water, do not clean with stain-removers containing solvents or oily products

Flame retardant :

UK: BS 5852	D: DIN 53438/T2	F: NFP 92.507
-------------	-----------------	---------------



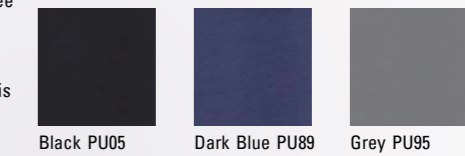
**PUxx**

Composition : PUxx nr.1, 100% Polyurethane, is fully PVC and Phthalate free  
 Weight : ± 510 g/m<sup>2</sup>  
 Abrasion resistance: > 90.000 Martindale  
 Light fastness : 6-7 (8 is excellent)  
 Cleaning : PUxx nr. 1 is very easily surface cleanable/disinfectable. It is resistant against commonly used cleaning products and disinfectants (alcohol based disinfectants, active chlorine, quaternary ammonium compounds). Never use solvents.

Advantages : Free of PVC and Phthalate, 100% waterproof, urine and blood resistant. Anti-bacterial and antifungal treatment. Deko-tex certificate. Extremely scratch resistant surface. High comfort because it transports heat easily (no sweaty feeling)

Flame retardant :

D DIN 4102 B1	EN 1021 1-2	GB BS5852 Crib 5	IMO 2010 FTP: part 8
---------------	-------------	------------------	----------------------

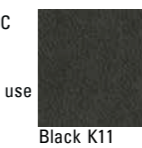


**LEATHERETTE**

Composition : Backing Cotton Jersey, coating fire retardant plasticised PVC  
 Weight : 590 g/m<sup>2</sup>  
 Light fastness : ISO105 >6  
 Cleaning : Clean material with humid cloth and householdsoap. Do not use cleaning-materials that contain solvents.

Flame retardant :

FMVSS 302 (= 95/28/EG IV, R118)	b, EN1021 1+2
---------------------------------	---------------

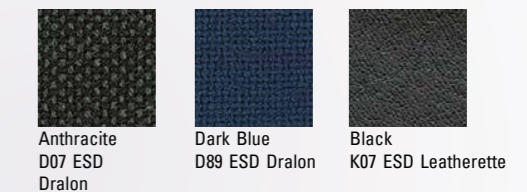


**ESD DRALON**

Composition : Dralon-Bekinox  
 Weight : 560 g/m<sup>2</sup>  
 Colour fastness : Scale 5-8  
 Abrasion resistance: 50.000 rubs Martindale  
 Cleaning : With a damp cloth, do not use bleach

**ESD LEATHERETTE**

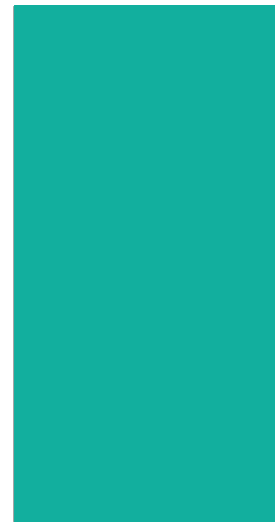
Composition : PVC Compound/CO/RES  
 Weight : 630 g/m<sup>2</sup>, ± 50 g/m<sup>2</sup> knitted fabric  
 Colour fastness : Scale 6-8  
 Cleaning : With a damp cloth, do not use bleach



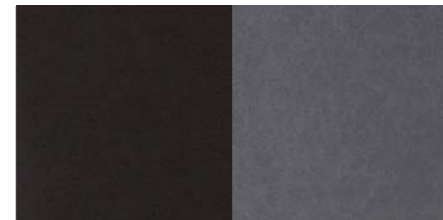
Witteveen Projectinrichting  
 Ouderkerk a/d Amstel  
 Tel: 020 - 496 5030  
 info@witteveen.nl  
 www.zadelstoel.nl  
 www.ergonomics.nl  
 www.project-inrichting.nl



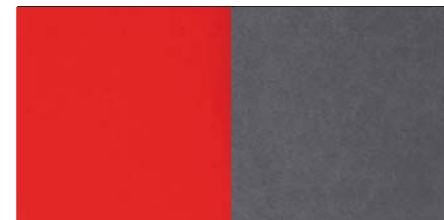
## Stamskin



**K184**  
Turquoise



**K05 / K85**  
Bicolor Black/Anthracite



**K87 / K85**  
Bicolor Bright Red/Anthracite



**K81 / K85**  
Bicolor Bright Green/Anthracite



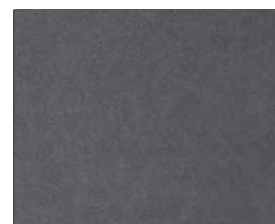
**K93 / K85**  
Bicolor Bright Orange/Anthracite



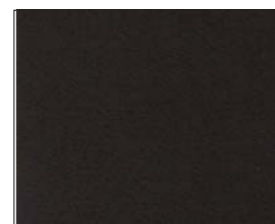
**K87**  
Bright Red



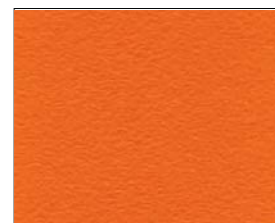
**K195**  
Grey



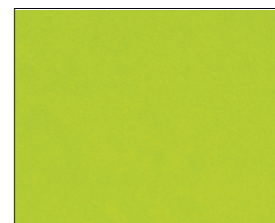
**K85**  
Anthracite



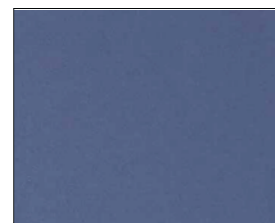
**K05**  
Black



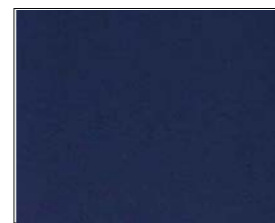
**K93**  
Bright Orange



**K81**  
Bright Green

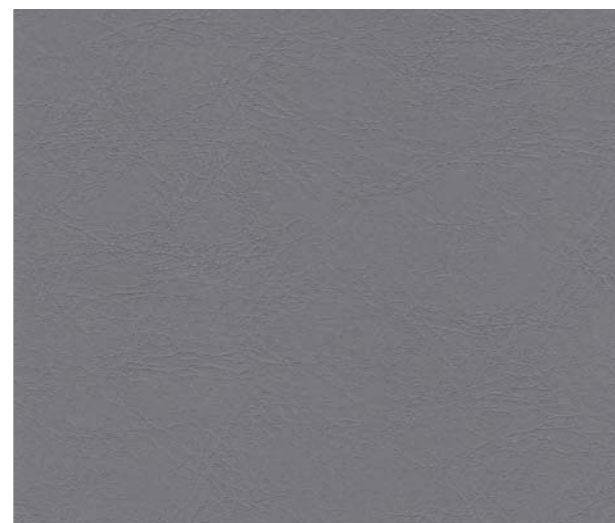


**K80**  
Bright Blue



**K89**  
Dark Blue

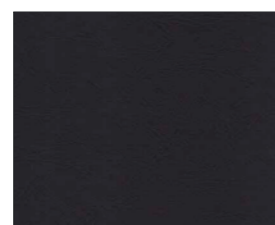
## PUxx



**PU95**  
Grey

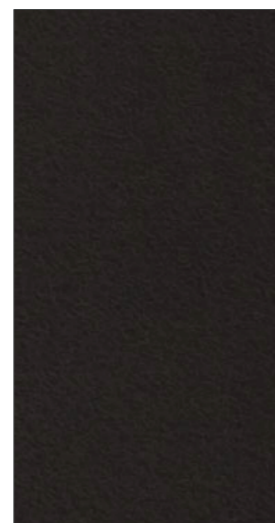


**PU89**  
Dark Blue



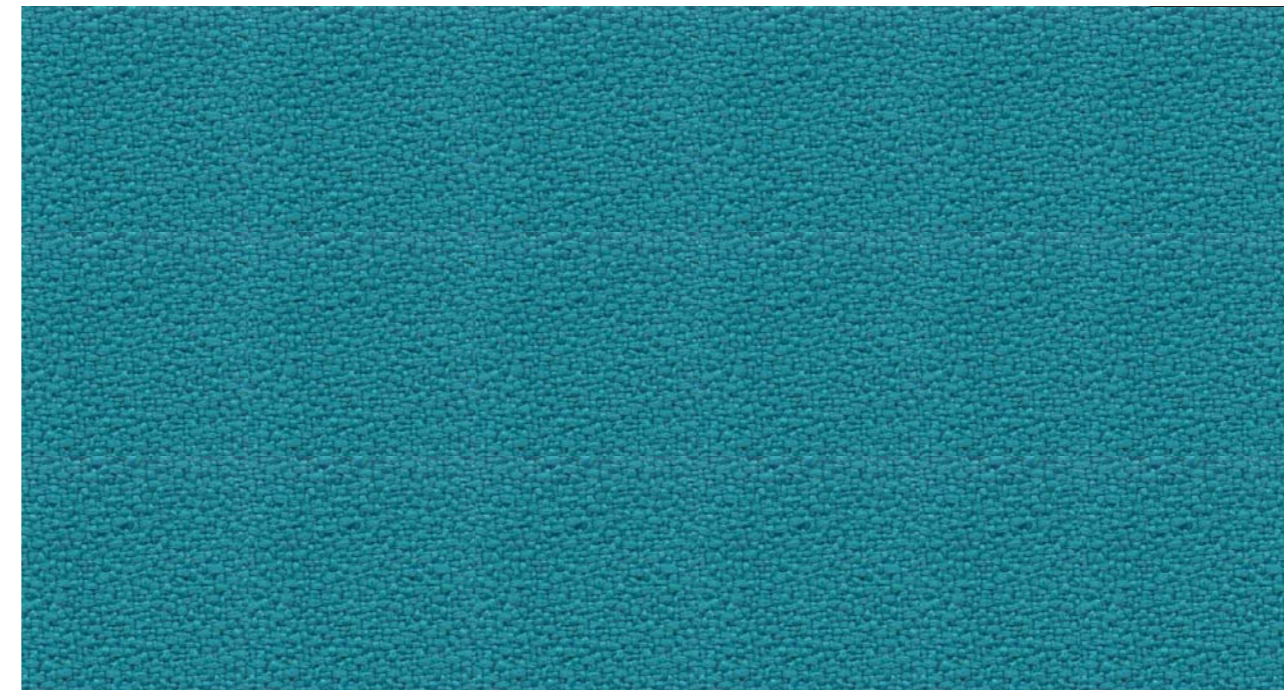
**PU05**  
Black

## Leatherette



**K11**  
Black

## Flex



**FL166**  
Petrol



**FL05**  
Black



**FL80**  
Light Blue



**FL81**  
Green



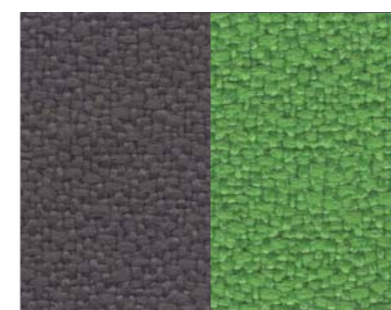
**FL85**  
Anthracite



**FL89**  
Dark Blue



**FL85 / FL80**  
Bicolor Anthracite/Blue

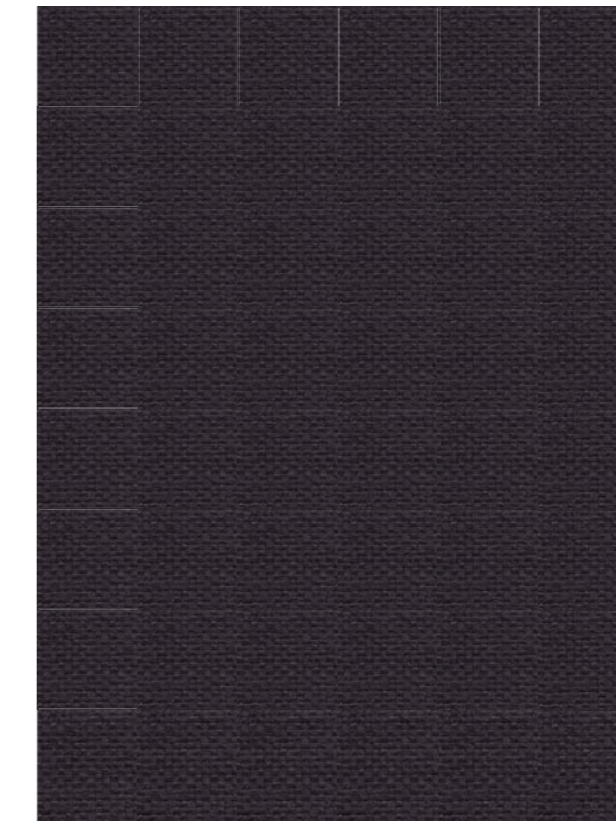


**FL85 / FL81**  
Bicolor Anthracite/Green



**FL85 / FL05**  
Bicolor Anthracite/Black

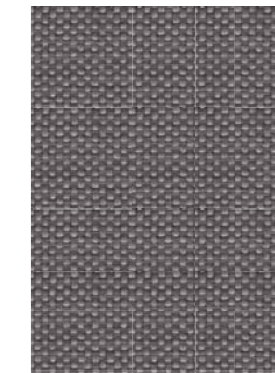
## Blend



**BL05**  
Black



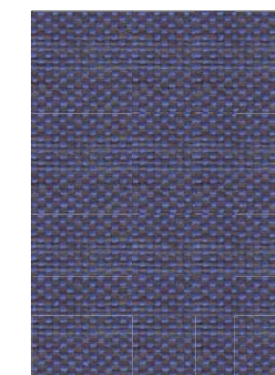
**BL77**  
White



**BL95**  
Grey



**BL87**  
Red



**BL89**  
Blue

## Trevira



**D17**  
Red



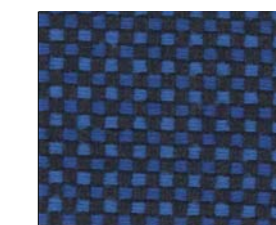
**D05**  
Anthracite



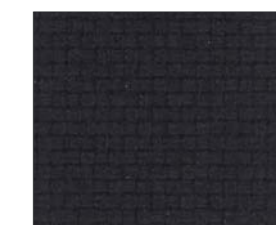
**D87**  
Blue



**D04**  
Grey

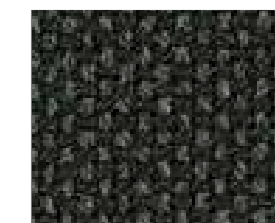


**D81**  
Blue Black



**D09**  
Black

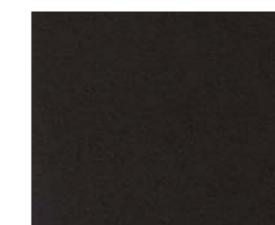
## ESD



**D07 ESD**  
Anthracite Dralon



**D89 ESD**  
Dark Blue Dralon



**K07 ESD**  
Black Leatherette