



## Setu™ Family colour choices

### Setu Family colour choice card

#### Lyris

Composition:  
Copolyester 74%, Polyester 26%  
Application:  
Weight: 37g/square foot  
Standards:  
Abrasion Resistance: Wyzenbeek, 200,000 double rubs  
Flammability: CA TB 117, NFPA 260  
Light Fastness: Grade 4, 40 hours

#### ColorGuard

Composition:  
Vinyl 100% / backing: Polyester 88%, Cotton 12%  
Application:  
Width: 137cm  
Weight: 36 ounces/linear yard  
Standards:  
Abrasion Resistance: Wyzenbeek, 200,000 double rubs  
Flammability: CA TB 117, NFPA 260, ASTM E 84  
Light Fastness: Grade 4, 40 hours

#### Crossing

Composition:  
Antimony-free Polyester 86%, Recycled Polyester 14%  
Application:  
Width: 137cm  
Weight: 12.9 ounces/linear yard  
Standards:  
Abrasion Resistance: Wyzenbeek, 200,000 double rubs  
Flammability: CA TB 117, NFPA 260, ASTM E 84  
Light Fastness: Grade 4, 40 hours

#### Stitches

Composition:  
Polyester 54%, recycled Polyester 46%  
Application:  
Width: 137cm  
Weight: 13.5 ounces/linear yard  
Standards:  
Abrasion Resistance: Wyzenbeek, 100,000 double rubs  
Flammability: CA TB 117, NFPA 260,  
Light Fastness: Grade 4, 40 hours

#### Twist

Composition:  
Antimony-free Polyester 80%, Recycled Polyester 13%,  
Polyester 7%  
Application:  
Width: 137cm  
Weight: 15 ounces/linear yard  
Standards:  
Abrasion Resistance: Wyzenbeek, 200,000 double rubs  
Flammability: CA TB 117, NFPA 260, ASTM E 84  
Light Fastness: Grade 4, 40 hours

Colour Matching: Batch to batch variations in shade may occur within commercial tolerances.


Maintenance:  
Vacuum regularly. Wipe clean with a damp cloth.



Witteveen Projectinrichting  
Ouderkerk a/d Amstel  
Tel: 020 - 496 5030  
info@witteveen.nl  
www.project-inrichting.nl  
www.ergo-burostoel.nl

For more information about our products and services or to see a list of dealers, please visit us at: [www.hermanmiller.com/worldwide](http://www.hermanmiller.com/worldwide) or call +44 845 2267201

PB1911

Herman Miller and  are registered trademarks of Herman Miller, Inc. Setu and Lyris are trademarks of Herman Miller, Inc.



## Setu Chair colour choices

### Base/linkage options



Graphite/Graphite  
G1



H-Alloy/H-Alloy  
L7



Semi-polished/H-Alloy  
5Y

### Frame and arm colour options



Graphite  
G1



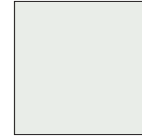
Slate Grey  
SG



Java  
5B

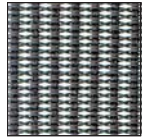


Chino  
JH

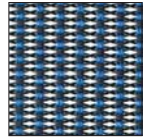


Studio White  
98

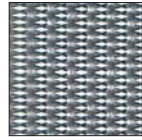
### Lyris 2 suspension colour options



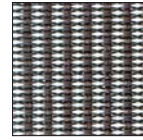
Graphite  
4W31



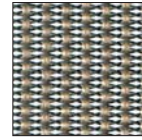
Berry Blue  
4W25



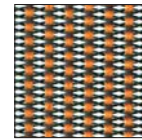
Slate Grey  
4W26



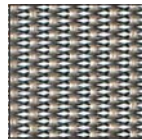
Java  
4W30



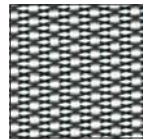
Rattan  
4W29



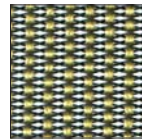
Mango  
4W22



Chino  
4W28

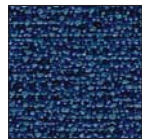


Alpine  
4W21



Chartreuse  
4W23

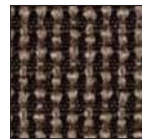
### Fabric options \*



Twist  
8R



Crossing  
8T



Stitches  
8U



ColorGuard  
3P



\*For the full range of fabric colours please refer to the fabric shade cards of Crossing, ColorGuard, Twist and Stitches.

Fabrics are not available on the Setu Stool in Europe

## Setu Table colour choices

### Standard Top finish colour options - melamine



Charcoal Ash  
14



Natural Walnut  
RY



Smoked Cherry  
13



Havana Cherry  
0C



Natural Beech  
RZ



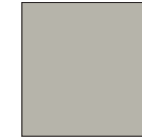
Napoli Oak  
0B



Light Ash  
12



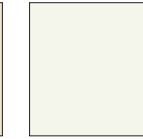
Maple  
A8



Folkstone Grey  
8Q



Soft White  
LU



Chalk White  
X1

### Standard Top finish colour options - veneer



Walnut on Ash  
EV



Walnut  
OU



Walnut open grain  
OUG



Oak  
OK



Oak open grain  
OKG



Oak on Ash  
EU



Maple  
Z5

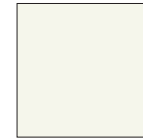


Maple open grain  
Z5G



Clear on Ash  
ET

### Plywood Top colour options - laminate



Chalk White  
X1



Walnut  
OU

### Plywood Top colour options - veneer

### Base finish colour options



Graphite  
G1



H-Alloy  
L7



Semi-polished  
5Y

### Column finish colour options



Black  
BK



Graphite  
G1



White  
91

Colour samples are limited by the printing process and are indicative only.